

# Haojue

## PARTS CATALOGUE

# HJ110-6



## PREFACE

This catalogue lists the spare parts used for the following model. Please do refer to the parts catalogue and indicate the parts number and the name listed in this catalogue correctly when you need to replace the spare parts.

Design Code	Factory Reference No. (Abbr. form in the catalogue)	Engine Reference No.	Engine Cad No.
HJ110-6	KF5612U00L-XXE05	EG12U15-E05	10091H12023H000

### 一、 How to place an order for spare parts?

#### 1. Required document:

The number must be provided as follow when order the spare parts:

- (a) The Engine parts: parts number and the Engine number
- (b) The Body parts: parts number and the Frame number

#### 2. Revision

The Revised Version would be published at a suitable time when the parts Catalogue needed to be revised or renewed. In this case, the edition number would be marked on the cover. The parts would have some difference because our products are improved continuously and the modified parts no. will not be informed before the new edition published.

### 二、 How to use the parts catalogue?

#### 1. Size

The unit of the parts' size indicated in the catalogue is 'mm', for example:

Parts name	Description
Bolt 6×12	Diameter 6mm, Length 12mm

O Ring D: 3.0, ID: 29.5	Section diameter 3mm, inner diameter 29.5mm
Bearing 35×72×17	Inner diameter 35mm, Outer diameter 72mm, Thickness 17mm

#### 2. Abbr.

The meaning of the Abbreviations in the catalogue are as the followings:

D: Section diameter NT: Number of Teeth L: Length ID: Inner diameter W: Width

OPT: Optional T: Thickness OD: Outer diameter OS: Over size

STD: Standard US: Under size LH: Left hand side RH: Right hand side

#### 3. Assy and the inner parts

The part number with a hyphen '-' in the front means this part could be supplied with the Assy (or the comp.), also could be supplied separately.

For example:

Item 1 CYLINDER HEAD ASSY

Item1-1 PIN,CAMSHAFT COVER

That means Item1-1 can be supplied with Item 1 and aslo can be supplied separately.

#### 4. The illustrations in the catalogue are just for the purpose to distinguish the parts. There might be some discrepancies between the illustrations and the real parts.. Furthermore, the illustrations can not be used for the assembling purpose. When assembling, pls use the Service Manual of the relative models.

#### 5. The instruction for the color parts

The catalogue lists are being supervised by color code.

For example: Assy,Fuel Tank 44100H22000HF01 F01 is the colour code and means "RED".

When place an order for the color parts, please use the correct parts number (with the color code), based on the compound color sheet of the models.

**This catalogue is edited according to the datas before 2016-7-1. The modification after that time should refer to the latest SPS(Spare Parts Modification notice).**

**HJ110-6 COLOR TABLE KF5612U00L-XXE05 7 COLOR STYLES**

REF. NO.	DESCRIPTION	PART NO.	a01 BLACK	a02 RED	a03 GRAY	a04 BLUE	a05 RED	a06 SILVERY	a07 WHITE	REMARKS
1	COVER SET, HANDLE FRONT	56031H56000H000	F01	F02	F03	F04	F05	F06	F07	
2	COVER, HANDLE FRONT	56311H56000H000	504	117	819	616	108	815	911	NOT SUPPLY
3	LOGO	68170H79000H000	SIL	SIL	MT1	SIL	SIL	MT1	MT1	
4	SHIELD, LEG FRONT	48111H56000H000	504	117	819	616	108	815	911	
5	FENDER, FRONT FRONT	53111H56000H000	504	117	819	616	108	815	911	
6	SHIELD SET, LEG, L	48031H56020H000	F01	F02	F03	F04	F05	F06	F07	
7	SHIELD, LEG, L	48311H56001H000	504	117	819	616	108	815	911	NOT SUPPLY
8	TAPE, LEFT LEG SHIELD, UPPER	68146H56000H000	RZ6	RZ7	RZ8	RZ9	SA1	SA2	SL7	NOT SUPPLY
9	TAPE, LEFT LEG SHIELD, LOWER	68147H56000H000	RZ6	RZ7	RZ8	RZ9	SA1	SA2	SL7	NOT SUPPLY
10	SHIELD SET, LEG, R	48021H56000H000	F01	F02	F03	F04	F05	F06	F07	
11	SHIELD, LEG, R	48211H56000H000	504	117	819	616	108	815	911	NOT SUPPLY
12	TAPE, RIGHT LEG SHIELD, UPPER	68136H56000H000	RZ6	RZ7	RZ8	RZ9	SA1	SA2	SL7	NOT SUPPLY
13	TAPE, RIGHT LEG SHIELD, LOWER	68137H56000H000	RZ6	RZ7	RZ8	RZ9	SA1	SA2	SL7	NOT SUPPLY
14	COVER SET, FRAME, L	47021H56000H000	F01	F02	F03	F04	F05	F06	F07	

**HJ110-6 COLOR TABLE KF5612U00L-XXE05 7 COLOR STYLES**

REF. NO.	DESCRIPTION	PART NO.	a01 BLACK	a02 RED	a03 GRAY	a04 BLUE	a05 RED	a06 SILVERY	a07 WHITE	REMARKS
15	COVER, FRAME, L	47211H56000H000	504	117	819	616	108	815	911	NOT SUPPLY
16	TAPE, FRAME COVER, L	68145H56000H000	RZ6	RZ7	RZ8	RZ9	SA1	SA2	SL7	NOT SUPPLY
17	COVER SET, FRAME, R	47011H56000H000	F01	F02	F03	F04	F05	F06	F07	
18	COVER, FRAME, R	47111H56000H000	504	117	819	616	108	815	911	NOT SUPPLY
19	TAPE, FRAME COVER, R	68135H56000H000	RZ6	RZ7	RZ8	RZ9	SA1	SA2	SL7	NOT SUPPLY
20	COVER, FRAME CENTER	47311H56000H000	504	117	819	616	108	815	911	

**INFORMATION ILLUSTRATION INDEX**

**1**

**ENGINE & TRANSMISSION**

**2**

**ELECTRICAL**

**3**

**BODY**

**4**

**PARTS NUMBER INDEX**

**5**





Fig. 1 CYLINDER HEAD&CYLINDER HEAD COVER (X01-S010-0012)

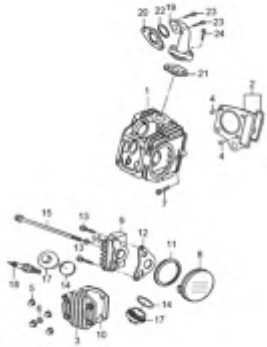


Fig. 2 CYLINDER (X01-S020-0004)

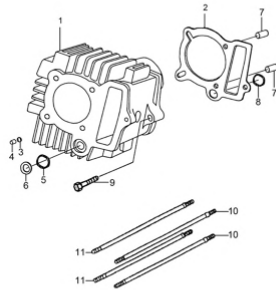


Fig. 3 CRANKCASE (X01-S030-0009)

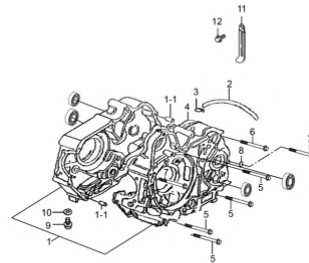


Fig. 4 CRANKCASE COVER (X01-S040-0013)

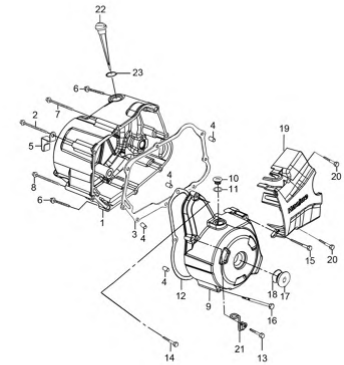


Fig. 5 CRANKSHAFT (X01-S050-0013)

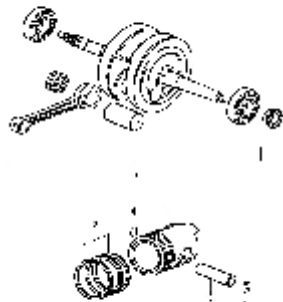


Fig. 6 STARTER CLUTCH (X01-S060-0006)



Fig. 7 CAMSHAFT-VALVE (X01-S070-0006)

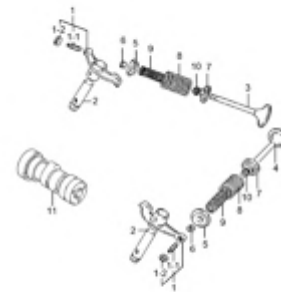
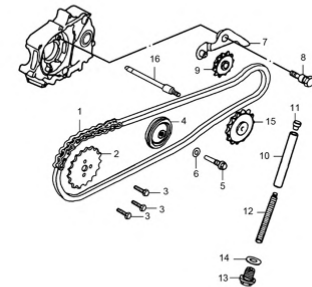


Fig. 8 CAM CHAIN (X01-S080-0004)



1

Fig. 9 CARBURETOR (X01-S090-0009)

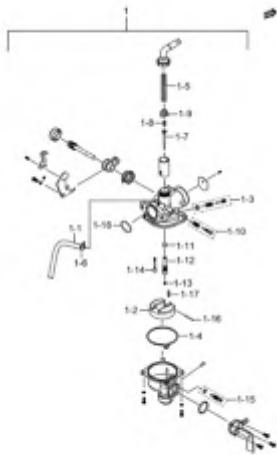


Fig. 10 AIR CLEANER (X01-S100-0007)

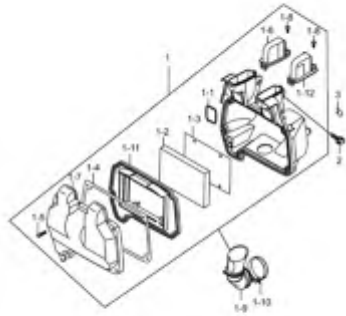


Fig. 11 MUFFLER (X01-S110-0011)

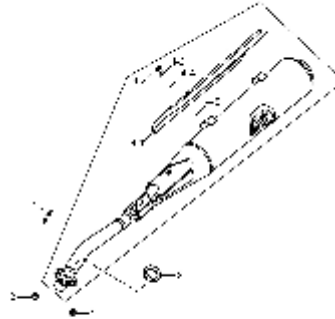


Fig. 12 OIL PUMP (X01-S130-0003)

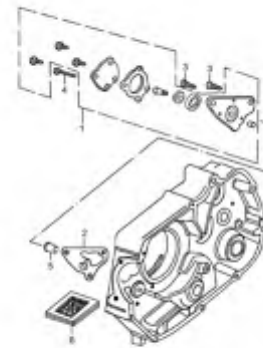


Fig. 13 CLUTCH (X01-S140-0013)

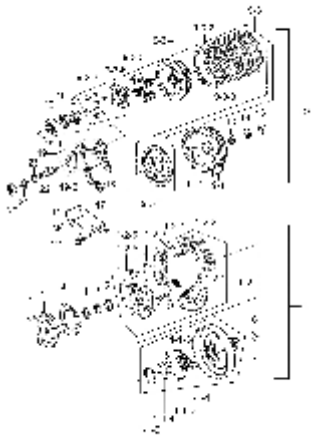


Fig. 14 TRANSMISSION (X01-S150-0004)

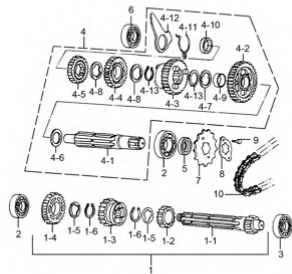


Fig. 15 GEAR SHIFTING (X01-S160-0010)

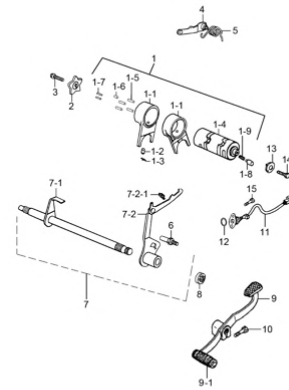


Fig. 16 KICK STARTER (X01-S165-0005)

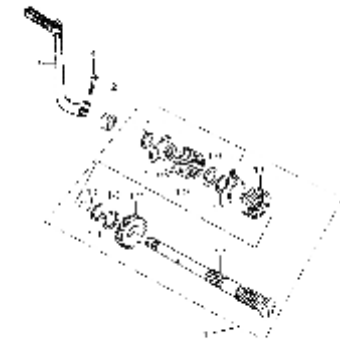


Fig. 17 STARTING MOTOR (X01-S170-0009)

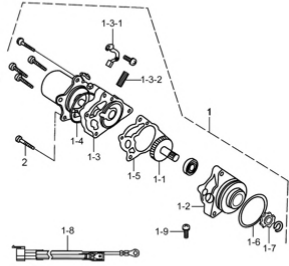


Fig. 18 MAGNETO (X01-S180-0006)

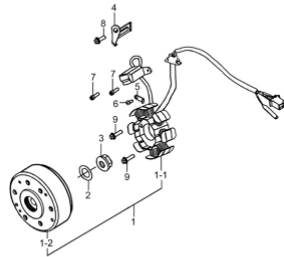


Fig. 19 BATTERY (X01-S190-0011)

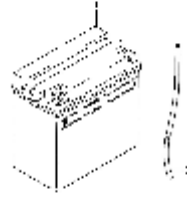


Fig. 20 ELECTRICAL (X01-S200-0008)

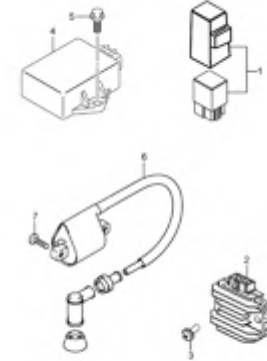


Fig. 21 SPEEDOMETER (X01-S210-0010)

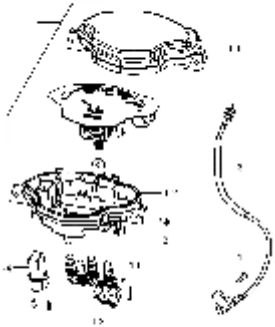


Fig. 22 HEADLAMP (X01-S220-0011)

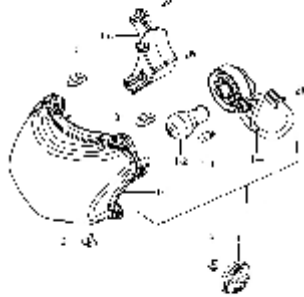


Fig. 23 TURN SIGNAL LAMP (X01-S230-0017)

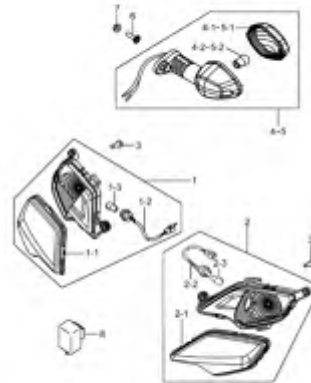


Fig. 24 REAR COMBINATION LAMP (X01-S240-0009)



Fig. 25 WIRING HARNESS (X01-S250-0019)

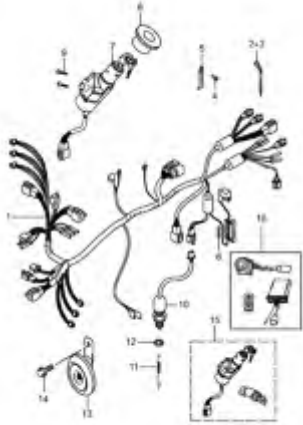


Fig. 26 FRAME (X01-S260-0014)

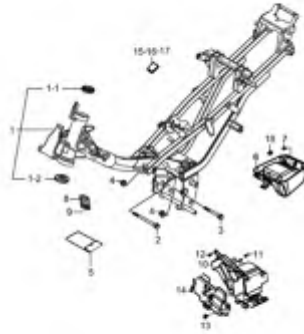


Fig. 27 STAND (X01-S270-0007)

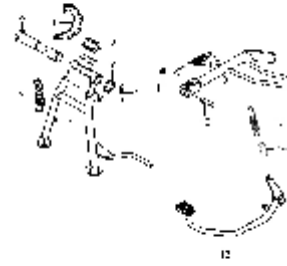


Fig. 28 FOOTREST (X01-S280-0012)

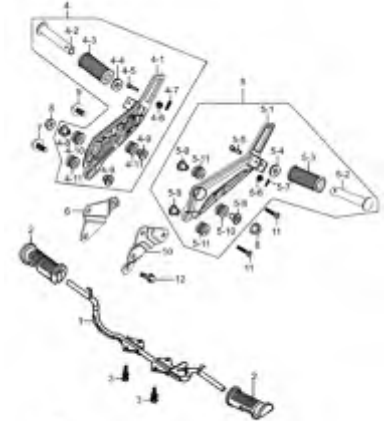


Fig. 29 FUEL TANK (X01-S290-0009)

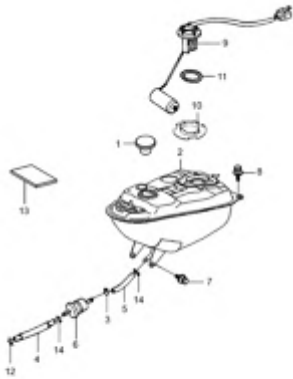


Fig. 30 LEG SHIELD (X01-S305-0041)

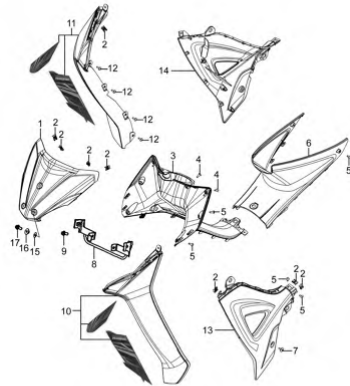


Fig. 31 FRAME COVER (X01-S310-0029)

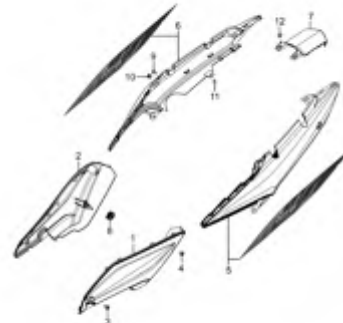


Fig. 32 FRONT FENDER (X01-S320-0004)

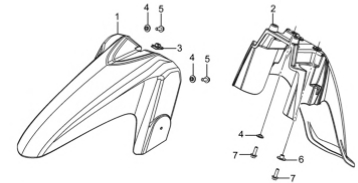


Fig. 33 HANDLEBAR (X01-S330-0014)

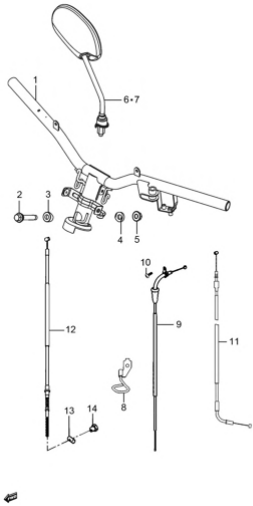


Fig. 34 HANDLE SWITCH (X01-S340-0008)

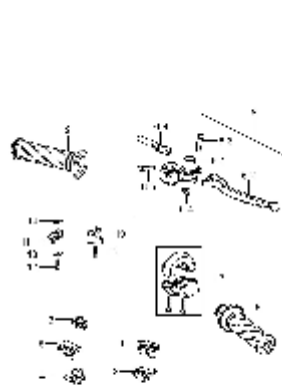


Fig. 35 REAR FENDER (X01-S350-0009)

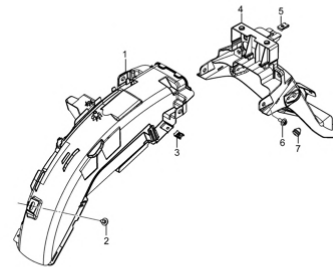


Fig. 36 HOUSING, HEADLAMP (X01-S355-0013)

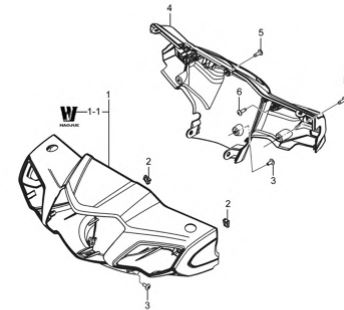


Fig. 37 LABEL (X01-S370-0013)

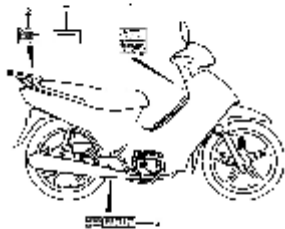


Fig. 38 SEAT (X01-S380-0009)

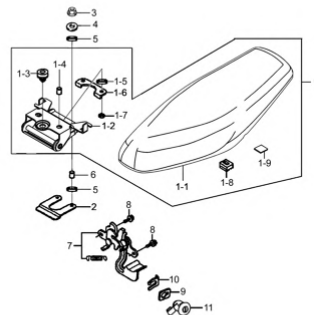


Fig. 39 STEERING STEM (X01-S400-0006)

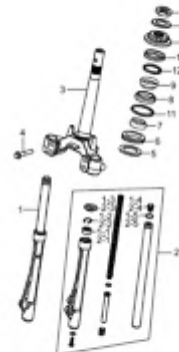
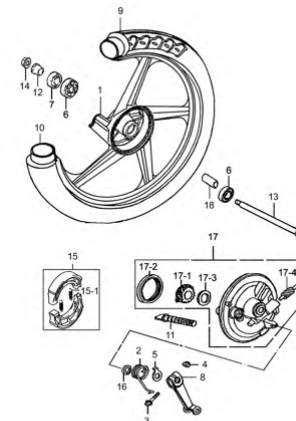


Fig. 40 FRONT WHEEL (X01-S410-0021)



1

Fig. 41 REAR SWINGING ARM  
(X01-S440-0007)

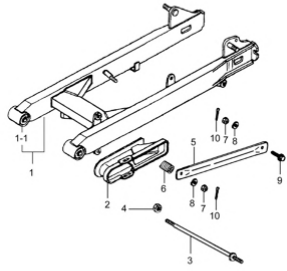


Fig. 42 REARSHOCK ABSORBER  
(X01-S450-0013)

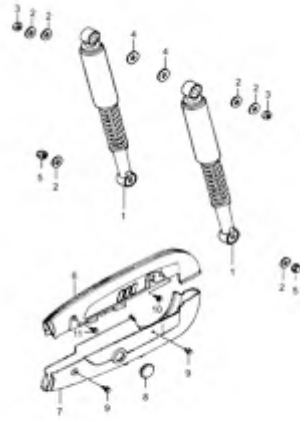


Fig. 43 REAR WHEEL (X01-S460-0038)

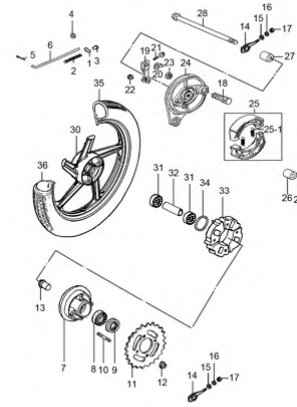


Fig. 44 CARRIER (X01-S480-0029)



Fig.1

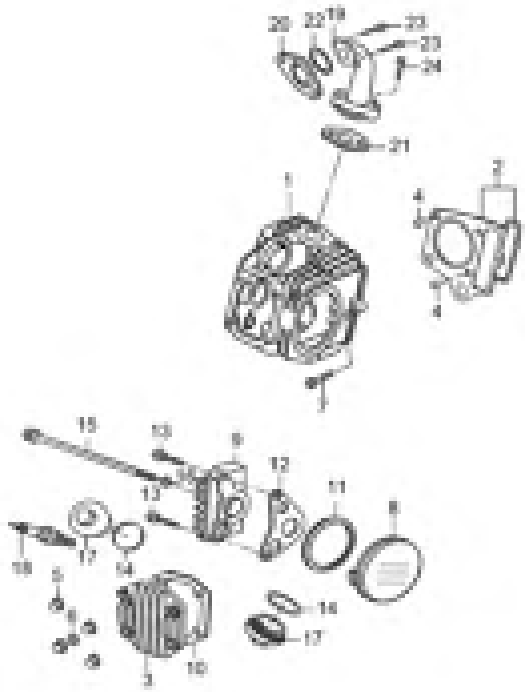


Fig.1 CYLINDER HEAD&CYLINDER HEAD COVER (X01-S010-0012)

REF. No.	PART No.	DESCRIPTION	Q'TY	REMARKS
1	11110H12020H000	HEAD COMP, CYLINDER	1	
2	11140H12020H000	GASKET ASSY, CYLINDER HEAD	1	
3	11171H12020H000	COVER, CYLINDER HEAD	1	
4	09206H08004H000	PIN, KNOCK	2	
5	11165H12010H000	NUT, TECTIFORM	4	
6	11167H12000H000	WASHER, PLAIN (COPPER)	4	
7	09128H06011H000	BOLT, HEX WITH CROSS RECESS	1	
8	11156H12020H000	COVER, CYLINDER HEAD, L	1	
9	11150H12020H000	COVER COMP, CYLINDER HEAD, R	1	
10	11173H12010H000	GASKET, CYL HEAD COVER	1	
11	11158H12030H000	GASKET, CYLINDER HEAD COVER, L	1	
12	11159H12000H000	GASKET, CYLINDER HEAD COVER, R	1	
13	01547-0620A-000	BOLT	2	
14	09280H31001H000	O-RING	2	
15	09103H06015H000	BOLT	1	
16	11167H12000H000	WASHER, PLAIN (COPPER)	1	
17	11175H12020H000	CAP, INSPECTION	2	
18	09482-00406-000	SPARK PLUG	1	
19	13111H56010H000	PIPE, INTAKE	1	
20	13128H12000H000	INSULATOR, INTAKE PIPE	1	
21	13121H12000H000	GASKET, INTAKE PIPE	1	
22	09280H25010H000	O-RING	1	
23	01500-0630A-000	BOLTS, HEXAGON HEAD	2	
24	01500-0625A-000	BOLTS, HEXAGON HEAD	2	

2

Fig. 2

2

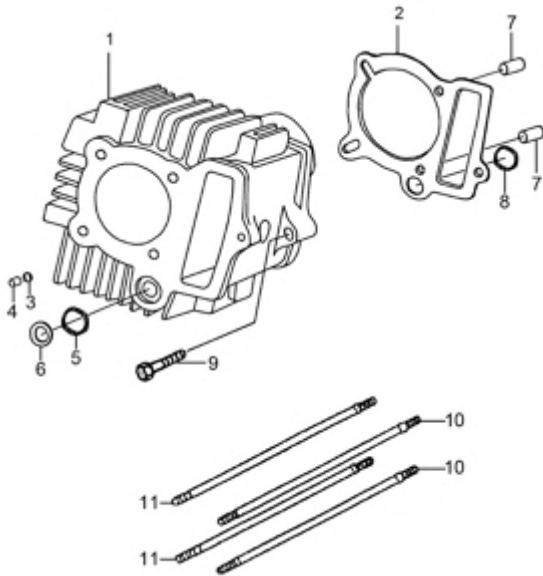


Fig.2 CYLINDER (X01-S020-0004)

REF. No.	PART No.	DESCRIPTION	Q' TY	REMARKS
1	11210H120R0H0H0	CYLINDER COMP	1	
2	11241H12000H000	GASKET, CYLINDER	1	
3	11214H12000H000	GASKET	1	
4	11215H12000H000	BUSH	1	
5	11216H12000H000	GASKET	1	
6	11217H12000H000	BUSH	1	
7	11218H35000H000	PIN	2	
8	11219H12000H000	GASKET	1	
9	09128H06011H000	BOLT, HEX WITH CROSS RECESS	1	
10	11183H12020H0A0	BOLT, STUD	2	
11	11183H12020H0B0	BOLT, STUD	2	



Fig. 3

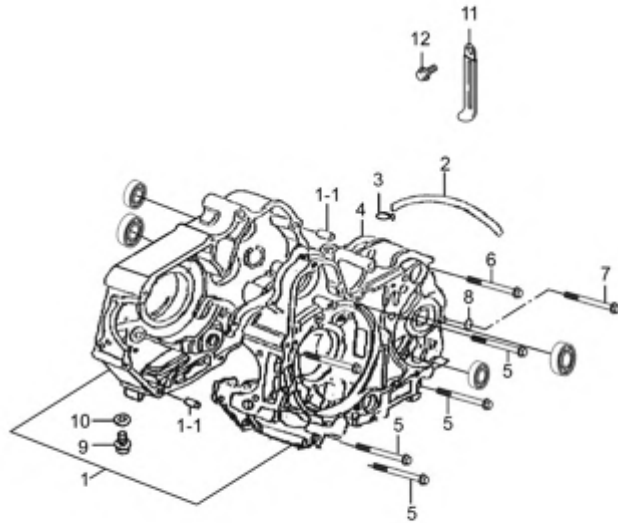


Fig.3 CRANKCASE (X01-S030-0009)

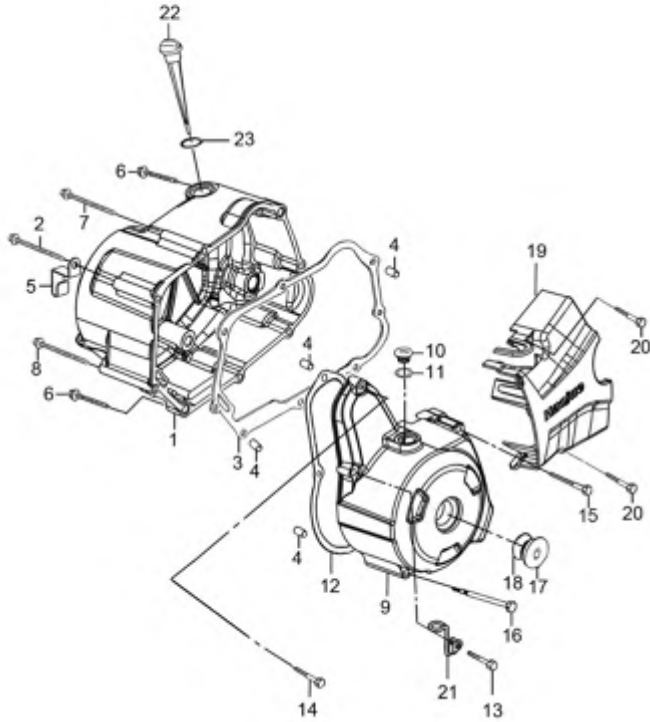
REF. No.	PART No.	DESCRIPTION	Q'TY	REMARKS
1	11300H12Y20H000	CRANKCASE ASSY	1	
1-1	09206H10007H000	PIN, KNOCK	2	
2	11415H120R2H000	HOSE, BREATHER	1	
3	11416H12000H000	CLAMP, BREATHER HOSE	1	
4	11481H12000H000	GASKET, CRANKCASE	1	
5	01547-0665A-000	BOLTS, HEXAGON HEAD FLANGE	4	
6	01547-0650A-000	BOLTS, HEXAGON HEAD FLANGE	1	
7	01547-0660A-000	BOLT	2	
8	09280-06011-000	O-RING	2	
9	11329H12002H000	PLUG, OIL DRAIN	1	
10	09280H11001H000	O-RING	1	
11	09404-06429-000	CLAMP, CARB OVFL HOSE	1	
12	01550-0612A-000	BOLT	1	

2



Fig. 4

2



**Fig.4 CRANKCASE COVER (X01-S040-0013)**

REF. No.	PART No.	DESCRIPTION	Q' TY	REMARKS
1	11340H12040H000	COVER COMP, CLUTCH	1	
2	09103H06014H000	BOLT	1	
3	11482H12000H000	GASKET, CLUTCH COVER	1	
4	11218H35000H000	PIN	4	
5	11418H12040H000	CLAMP	1	
6	01547-0640A-000	BOLTS, HEXAGON HEAD FLANGE	5	
7	01547-0665A-000	BOLTS, HEXAGON HEAD FLANGE	1	
8	01547-0680A-000	BOLTS, HEXAGON HEAD FLANGE	1	
9	11351H12030H000	COVER, MAGNETO	1	
10	11353H33001H000	PLUG, TIMING OBSERVATION HOLE	1	
11	09280H13010H000	O-RING	1	
12	11483H12000H000	GASKET, MAGNETO COVER	1	
13	01547-0630A-000	BOLT	1	
14	09103H06013H000	BOLT	1	
15	01547-0655A-000	HEXAGON BOLT WITH FLANGE	1	
16	01547-0670A-000	BOLTS, HEXAGON HEAD FLANGE	1	
17	09259-26016-000	PLUG, CSHAFT HOLE	1	
18	09280-22008-000	O-RING	1	
19	11361H12040H000	COVER, ENG SPROCKET	1	
20	01547-06287-000	BOLT	2	
21	13695H52100H000	CLAMP, CARB AIR VENT HOSE	1	
22	11971H12020H000	GAUGE, OIL LEVEL	1	
23	09280H18002H000	O RING	1	

Fig. 5

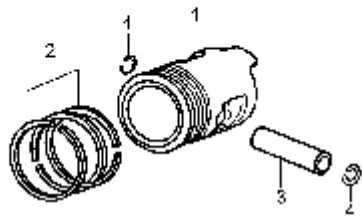
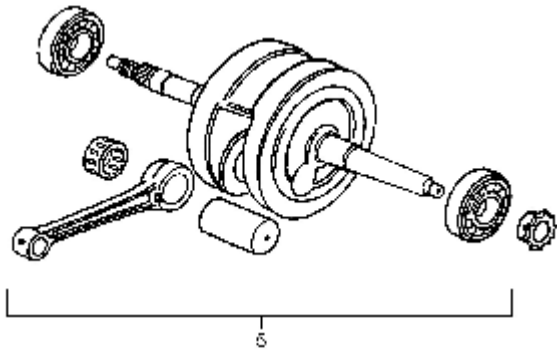


Fig.5 CRANKSHAFT (X01-S050-0013)

REF. No.	PART No.	DESCRIPTION	Q'TY	REMARKS
1	12111H12001H0H0	PISTON	1	
2	12140H12020H000	RING SET, PISTON	1	
3	12151H12000H000	PIN, PISTON	1	
4	12152H12000H000	WASHER, PISTON PIN BEARING	2	
5	12200H13010H000	CRANKSHAFT ASSY	1	

2



Fig. 6

2

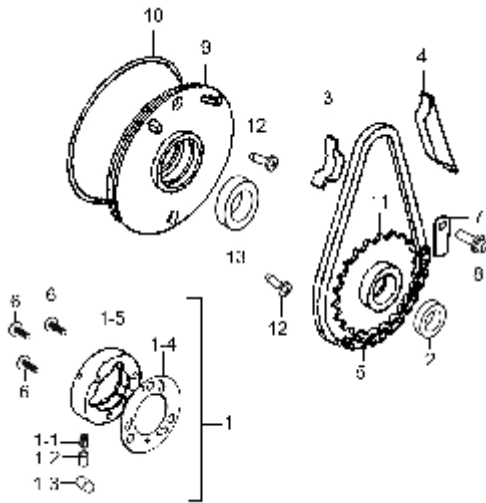


Fig.6 STARTER CLUTCH (X01-S060-0006)

REF. No.	PART No.	DESCRIPTION	Q'TY	REMARKS
1	12640H12C00H000	STARTER CLUTCH ASSY	1	
1-1	09440H04001H000	SPRING, COMPRESSION	3	
1-2	12633H12000H000	PIECE, STARTER CLUTCH RLR PUSH	3	
1-3	09261H10003H000	ROLLER	3	
1-4	12649H12C00H000	SHIM, STARTER CLUTCH HUB	1	
1-5	12630H12C00H000	HUB COMP, STARTER CLUTCH	1	
2	09283H18011H000	SEAL, OIL	1	
3	27750H12010H000	BRACKET COMP, CHAIN TENSIONER	1	
4	27750H12020H000	BRACKET COMP, CHAIN TENSIONER	1	
5	12735H12000H000	CHAIN, STARTER	1	
6	32491H33010H000	BOLT, MAGNETO ROTOR	3	
7	12643H12000H000	RETAINER, STARTER CLUTCH SPROCKET	1	
8	01547-0612A-000	HEXAGON BOLT WITH FLANGE	1	
9	11391H12010H000	PLATE, OIL	1	
10	09280H00001H000	O-RING	1	
11	12620H12000H000	GEAR COMP, STARTER CLUTCH	1	
12	02122-0616A-000	SCREW	2	
13	09283H30011H000	SEAL, OIL	1	

Fig.7

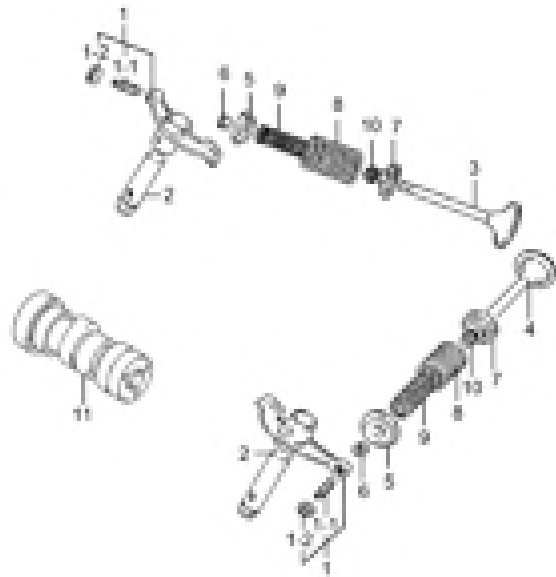


Fig.7 CAMSHAFT-VALVE (X01-S070-0006)

REF. No.	PART No.	DESCRIPTION	Q'TY	REMARKS
1	12840H12040H000	ARM COMP, VALVE ROCKER	2	
1-1	12842H12000H000	SCREW, TAPPET ADJUSTING	1	
1-2	12843H12000H000	NUT, TAPPET ADJUSTING	1	
2	12861H12000H000	SHAFT, VALVE ROCKER ARM	2	
3	12911H12020H000	VALVE, INTAKE	1	
4	12912H12010H000	VALVE, EXHAUST	1	
5	12931H12000H000	RETAINER VALVE SPRING	2	
6	12932H50100H000	COTTER VALVE	4	
7	12933H12000H000	SEAT, VALVE SPRING	2	
8	12922H12000H000	SPRING, VALVE OUTER	2	
9	12921H12000H000	SPRING, VALVE INNER	2	
10	09283H10002H000	SEAL, OIL	2	
11	12710H12020H000	CAMSHAFT COMP	1	

2

Fig. 8

2

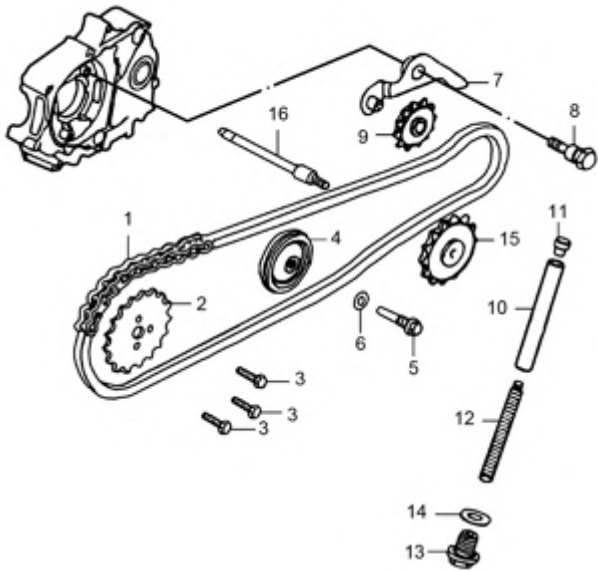


Fig.8 CAM CHAIN (X01-S080-0004)

REF. No.	PART No.	DESCRIPTION	Q' TY	REMARKS
1	12760H12000H000	CHAIN COMP, CAMSHAFT DRIVE	1	
2	12741H12000H000	SPROCKET, CAMSHAFT	1	
3	12872H12000H000	BOLT, ROCKER ARM SHAFT EX	3	
4	12771H12000H000	WHEEL, NO-CORE GUIDE	1	
5	09135H08006H000	BOLT	1	
6	09160H08009H000	WASHER, PLAIN	1	
7	12830H12000H000	ADJUSTER ASSY, TENSIONER	1	
8	12812H12000H000	BOLT, TENSIONER	1	
9	12810H12000H000	TENSIONER COMP	1	
10	12880H12000H000	ROD COMP, TENSION	1	
11	12882H12000H000	UNION, TENSION ROD	1	
12	12883H12000H000	SPRING, TENSION ROD	1	
13	12884H12001H000	PLUG, TENSION ROD	1	
14	09160H14003H000	WASHER, PLAIN	1	
15	16330H12000H000	GEAR COMP, OIL PUMP DRIVEN	1	
16	21711H12000H000	SHAFT, PILOT	1	

Fig.9

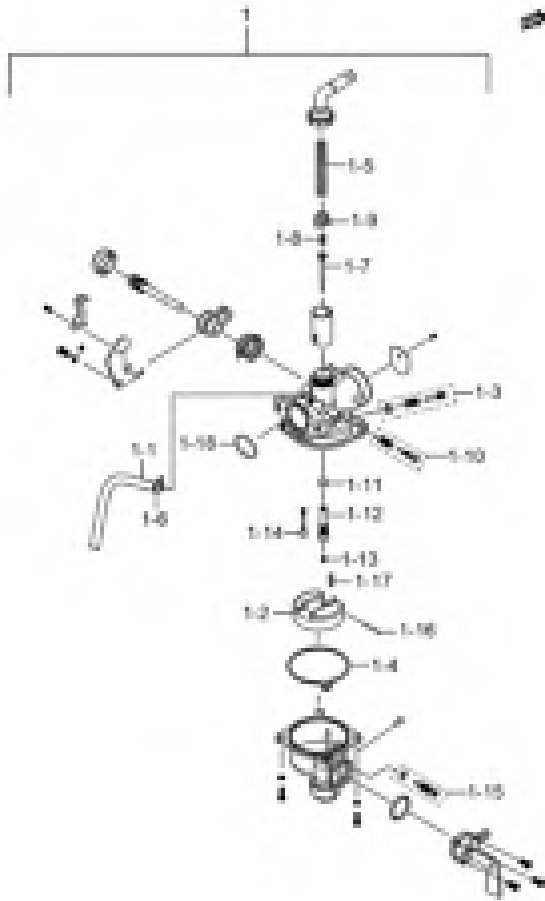


Fig.9 CARBURETOR (X01-S090-0009)

REF. No.	PART No.	DESCRIPTION	Q'TY	REMARKS
1	13200H56110H000	CARBURETOR ASSY	1	
1-1	13684H21D20H000	AIR VENT HOSE	1	
1-2	13250H51100H000	FLOAT ASSY	1	
1-3	13279H51100H000	ADJUSTER, AIR	1	
1-4	13251H56000H000	GASKET	1	
1-5	13573H51100H000	COMPRESSION SPRING	1	
1-6	09401H51110H000	CLIP	1	
1-7	13383H56110H000	JET NEEDLE	1	
1-8	13388H51100H000	COMPRESSION SPRING	1	
1-9	13389H51110H000	CAP, JET NEEDLE	1	
1-10	13267H51100H000	ADJUSTER	1	
1-11	09494H51100H000	NEEDLE JET	1	
1-12	13385H51100H000	JET HOLDER	1	
1-13	09491H78070H000	JET, MAIN	1	
1-14	09492H56000H000	JET, PILOT	1	
1-15	13247H51100H000	SCREW, DRAIN	1	
1-16	13254H51100H000	FLOAT PIN	1	
1-17	13370H56000H000	NEEDLE VALVE ASSY	1	
1-18	13253H51100H000	O-RING	1	

2

Fig. 10

2

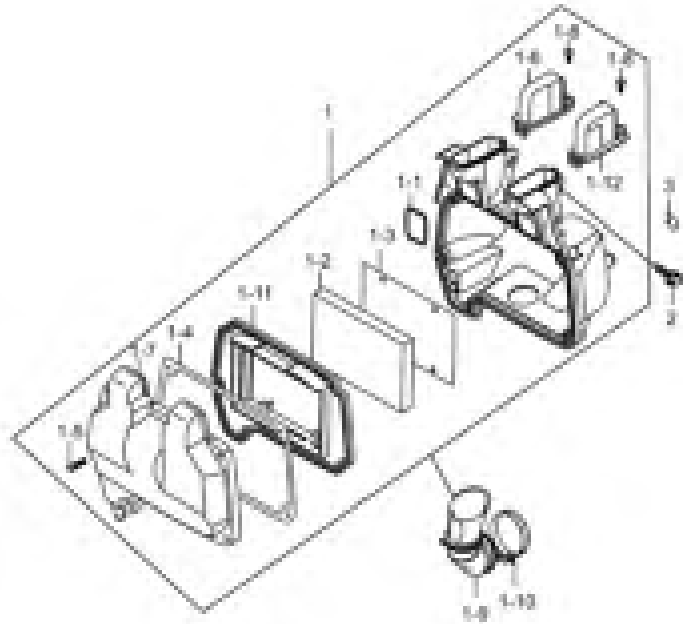


Fig.10 AIR CLEANER (X01-S100-0007)

REF. No.	PART No.	DESCRIPTION	Q' TY	REMARKS
1	13700H56010H000	CLEANER ASSY, AIR	1	
1-1	13723H51300H000	GASKET, AIR CLNR CAP, NO. 1	1	
1-2	13781H51300H000	FILTER, AIR CLNR	1	
1-3	13810H51300H000	TRAP COMP, FLAME	1	
1-4	13724H51300H000	GASKET, AIR CLNR CAP, NO. 2	1	
1-5	03541-0520B-000	CROSS RECESSED HEAD TAPPING SCREW	4	
1-6	13742H51300H000	COVER, AIR CLNR INLET, R	1	
1-7	13713H56000H000	CAP, AIR CLNR	1	
1-8	03141-0412B-000	CROSS RECESSED HEAD TAPPING SCREW	2	
1-9	13881H51300H000	TUBE OUTLET	1	
1-10	09402H44203H000	CLAMP	1	
1-11	13791H51301H000	HOLDER, FILTER	1	
1-12	13743H51300H000	COVER, AIR CLNR INLET, L	1	
2	01550-0610B-000	HEXAGON BOLT WITH FLANGE	2	
3	09401H10301H000	CLIP	1	



Fig. 11

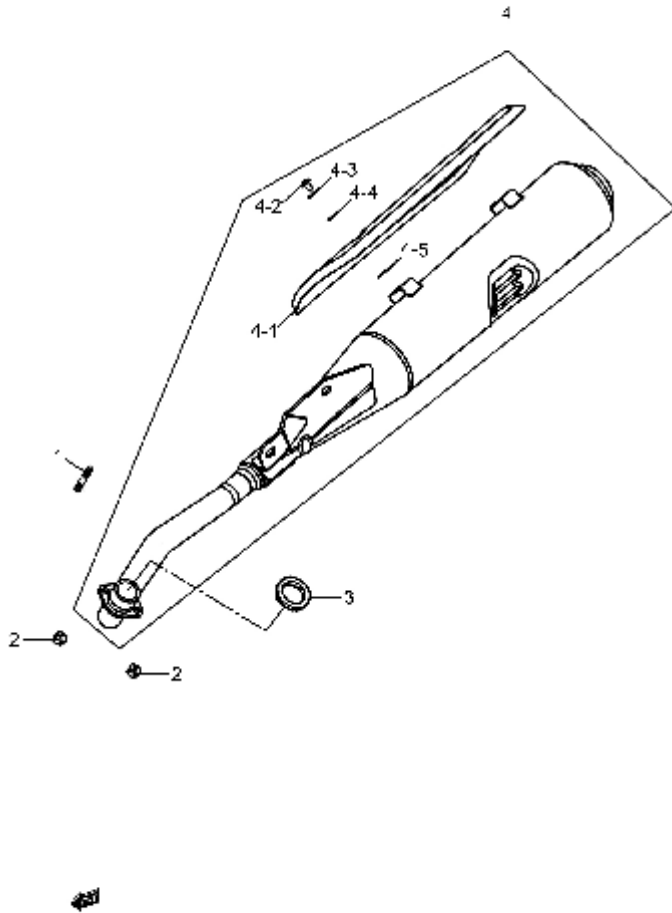


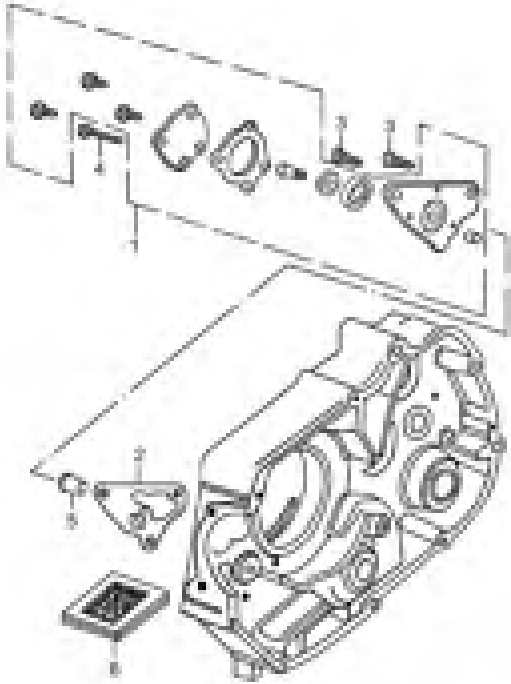
Fig.11 MUFFLER (X01-S110-0011)

REF. No.	PART No.	DESCRIPTION	Q'TY	REMARKS
1	12728H12000H000	BOLT, STUD	2	
2	08310-0006A-000	NUT	2	
3	14181H50000H000	GASKET, EXHAUST PIPE	1	
4	14036H56100H000	MUFFLER SET	1	
4-1	14781H56000H000	COVER, MUF	1	
4-2	09139-06167-000	SCREW	2	
4-3	09160-06164-000	WASHER, PLAIN	2	
4-4	09161H06004H000	WASHER	2	
4-5	09168H06002H000	GASKET	2	

2

Fig. 12

2



**Fig.12 OIL PUMP (X01-S130-0003)**

REF. No.	PART No.	DESCRIPTION	Q' TY	REMARKS
1	16400H12000H000	PUMP ASSY, ENG OIL	1	
2	16731H12000H000	GASKET, OIL PUMP	1	
3	01547-0616A-000	BOLT	2	
4	01547-0625A-000	BOLT	1	
5	23267H12010H000	BUSH	1	
6	16520H12000H000	STRAINER COMP, ENG OIL	1	

Fig. 13

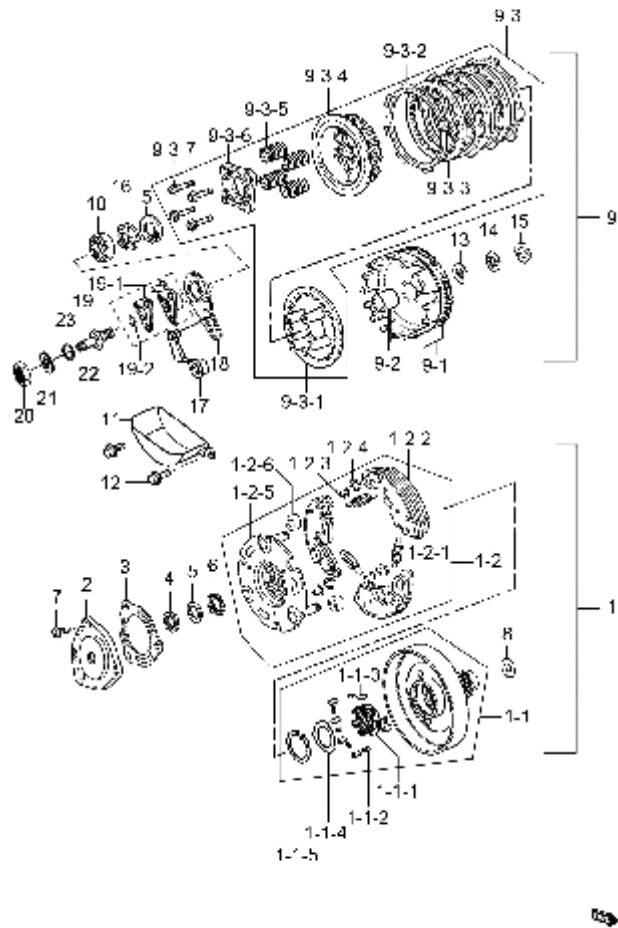


Fig.13 CLUTCH (X01-S140-0013)

REF. No.	PART No.	DESCRIPTION	Q'TY	REMARKS
1	21301H13020H000	CLUTCH COMP, PRIMARY	1	
1-1	21221H13010H000	HOUSING, CLUTCH	1	
1-1-1	21631H13010H000	RACE, ONE WAY CLUTCH INNER	1	
1-1-2	21535H13010H000	SPRING, SIMPLEX FIXING	6	
1-1-3	21543H13010H000	ROLLER, PRINMARY CLUTCH	6	
1-1-4	24149H13000H000	CLIP	1	
1-1-5	24149H13010H000	CLIP	1	
1-2	21134H13010H000	DISC COMP, PRIMARY CLUTCH DRIVE	1	
1-2-1	21337H13010H000	SPRING, PRINMARY CLUTCH	3	
1-2-2	21501H13020H000	CLUTCH ASSY, SHOE	3	
1-2-3	24149H13020H000	CLIP	3	
1-2-4	21528H13010H000	WASHER, THRUST	3	
1-2-5	21135H13010H000	DISC SET, PRIMARY CLUTCH DRIVE	1	
1-2-6	21546H13010H000	DAMPER, CLUTCH	3	
2	21344H13010H000	COVER, PRIMARY CLUTCH	1	
3	21345H13010H000	GASKET, PRIMARY CLUTCH	1	
4	21533H12000H000	NUT, ROUND	1	
5	21529H12000H000	WASHER, DISH	2	
6	21348H13010H000	WASHER, THRUST	1	
7	02112-0508A-000	CROSS RECESSED HEAD SCREW	3	
8	21528H13020H000	WASHER, THRUST	1	
9	21601H13020H000	CLUTCH COMP, SECONDARY	1	
9-1	22130H13020H000	DISC COMP, DRIVE	1	
9-2	21643H13010H000	BUSH	1	
9-3	21410H13010H000	HUB COMP, CLUTCH SLEEVE	1	
9-3-1	21635H13010H000	DISC, PRESSURE	1	
9-3-2	21441H13020H000	PLATE, CLUTCH DRIVE	4	
9-3-3	21451H13010H000	PLATE, CLUTCH DRIVEN	3	
9-3-4	21621H13010H000	SPACER, CLUTCH SLEEVE HUB	1	

2

Fig. 13

2

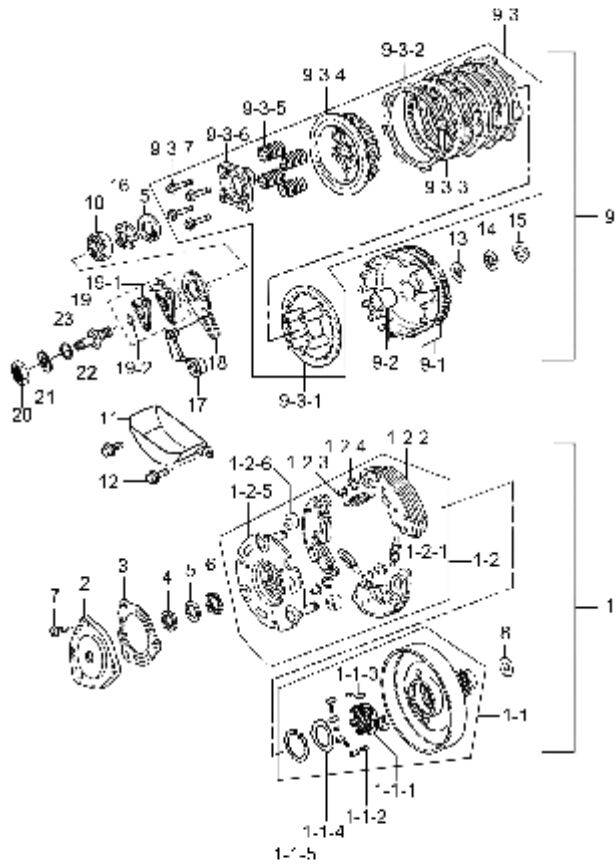
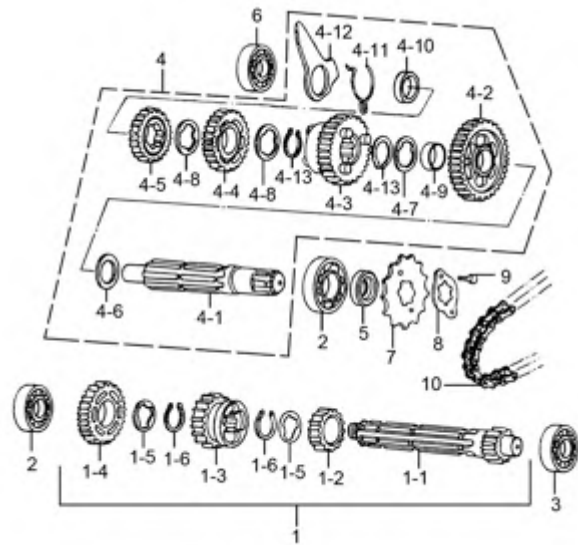


Fig.13 CLUTCH (X01-S140-0013)

REF. No.	PART No.	DESCRIPTION	Q' TY	REMARKS
9-3-5	21634H13010H000	SPRING, COMPRESSION	4	
9-3-6	21462H13010H000	DISC, CLUTCH PRESSURE	1	
9-3-7	21421H35000H000	BOLT	4	
10	21527H12000H000	BEARING	1	
11	13851H13010H000	OIL BOX	1	
12	01547-0612A-000	HEXAGON BOLT WITH FLANGE	2	
13	21616H13010H000	RING, LOCATING	1	
14	21619H13010H000	WASHER, SPLINE	1	
15	11325H13010H000	BUSH	1	
16	21644H13010H000	NUT, LOCK	1	
17	23260H13000H000	ARM COMP, CONTROL	1	
18	23211H12C00H000	GUIDE, RELEASE BALL INNER	1	
19	23230H12000H000	GUIDE ASSY, RELEASE BALL, OUTER	1	
19-1	23250H12000H000	BALL COMP, CLUTCH RELEASE	1	
19-2	24149H12C00H000	CLIP	1	
20	21655H13001H000	NUT, TENSION	1	
21	09160H08002H000	WASHER, PLAIN	1	
22	23268H12C00H000	SCREW, CLUTCH ADJUSTING	1	
23	09280H08010H000	O-RING	1	

Fig. 14

Fig.14 TRANSMISSION (X01-S150-0004)



REF. No.	PART No.	DESCRIPTION	Q'TY	REMARKS
1	24102H51300H000	SHAFT ASSY, COUNTER	1	
1-1	24121H13000H000	SHAFT, COUNTER	1	
1-2	24221H12000H000	GEAR, 2ND DRIVE	1	
1-3	24231H12000H000	GEAR, 3RD DRIVE	1	
1-4	24241H13000H000	GEAR, 4TH DRIVE	1	
1-5	24148H12000H000	WASHER, SPL INE	2	
1-6	24149H12000H000	CLIP	2	
2	08110-62030-000	BEARING, AXLE SHAFT, L	2	
3	08110-60010-000	BEARING, CLUTCH	1	
4	24103H51300H000	SHAFT ASSY, DRIVE	1	
4-1	24131H51300H000	SHAFT, DRIVE	1	
4-2	24311H12000H000	GEAR, 1ST DRIVEN	1	
4-3	24321H12000H000	GEAR, 2ND DRIVEN	1	
4-4	24331H12000H000	GEAR, 3RD DRIVEN	1	
4-5	24341H12000H000	GEAR, 4TH DRIVEN	1	
4-6	24153H12000H000	WASHER	1	
4-7	24232H12000H000	WASHER	1	
4-8	24232H12010H000	WASHER	2	
4-9	24156H12000H000	BUSH	1	
4-10	13912H12000H000	COLLAR	1	
4-11	24158H12000H000	SPRING, STOPPING	1	
4-12	24159H12000H000	PLATE, GUIDE	1	
4-13	24129H12000H000	CLIP, ELASTIC	2	
5	09283H17010H000	SEAL, OIL	1	
6	21645H12020H000	BEARING	1	
7	27511H12000H000	SPROCKET, ENGINE	1	
8	27512H12000H000	PLATE, ENGINE SPROCKET	1	
9	09100H06002H000	BOLT, HEXAGON	2	
10	27600H52100H100	CHAIN ASSY, DRIVE	1	

2

Fig. 15

2

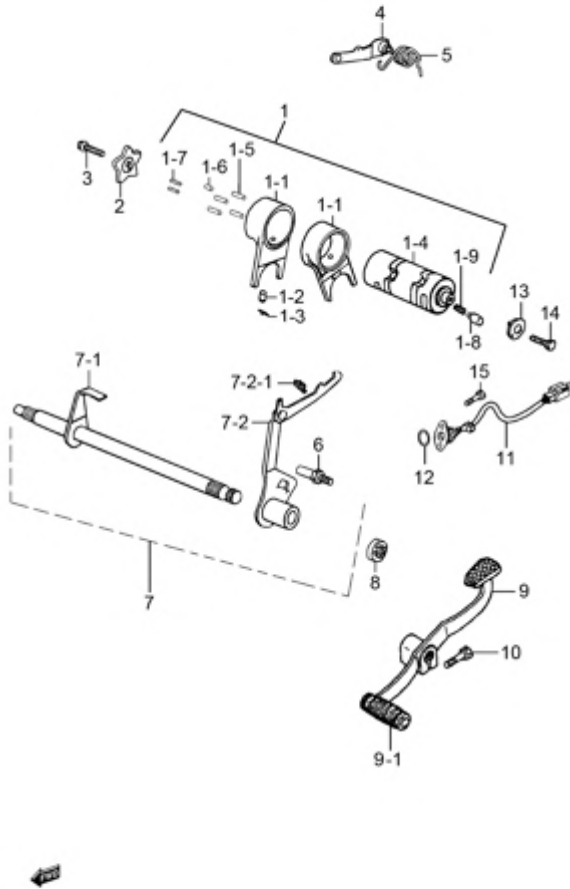


Fig.15 GEAR SHIFTING (X01-S160-0010)

REF. No.	PART No.	DESCRIPTION	Q'TY	REMARKS
1	25031H51300H000	CAM SET, GEAR SHIFT	1	
1-1	25211H12000H000	FORK, GEAR SHIFT, R	2	
1-2	25212H12000H000	PIN, FORK	2	
1-3	25213H12000H000	CLAMP, SPRING	2	
1-4	25311H51300H000	CAM, GEAR SHIFT	1	
1-5	25329H12000H000	PIN, GEAR SHIFT	4	
1-6	25334H12000H000	PIN	1	
1-7	25335H12000H000	PIN, GEAR SHIFT FIVE-STAR WHEEL	2	
1-8	25314H12030H000	PIN, CAM SHIFT	1	
1-9	09440H04020H000	SPRING, COMPRESSION	1	
2	25381H12C00H000	PLATE, SHIFT CAM STOPPER	1	
3	25312H12010H000	BOLT, GEAR SHIFT CAM STOPPER PLATE	1	
4	25350H12020H000	STOPPER COMP, GEAR SHIFT CAM	1	
5	25339H12010H000	SPRING, GEAR SHIFT LOCATING PLATE	1	
6	25357H12000H000	BOLT, CAM STOPPER ARM	1	
7	25500H12C00H000	SHAFT ASSY, GEAR SHIFT	1	
7-1	25510H13000H000	SHAFT COMP, GEAR SHIFT	1	
7-2	25520H12C00H000	ARM COMP, GEAR SHIFT LINK	1	
7-2-1	26226H12C00H000	SPRING, RELEASE	1	
8	09283H12001H000	SEAL, OIL	1	
9	25600H56010H000	LEVER ASSY, GEAR SHIFT	1	
9-1	25652H16500H000	RUBBER, GEAR SHIFT PEDAL	1	
10	01500-0620A-000	BOLT	1	
11	37720H51300H000	BASE ASSY, GEAR SHIFT TERM	1	
12	09280H28001H000	O-RING	1	
13	37730H51300H000	BASE ASSY, GEAR SHIFT TERM	1	
14	07130-06169-000	HEXAGON SOCKET HEAD CAP SCREW	1	
15	02112-0418A-000	CROSS RECESSED HEAD SCREW	2	

Fig.16

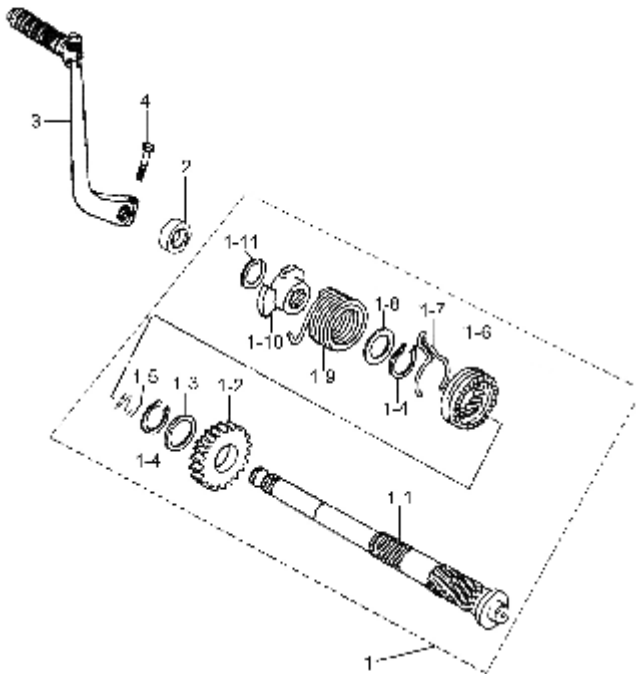


Fig.16 KICK STARTER (X01-S165-0005)

REF. No.	PART No.	DESCRIPTION	Q'TY	REMARKS
1	26210H13020H000	SHAFT COMP, KICK STARTER	1	
1-1	26211H12000H000	SHAFT, KICK STARTER	1	
1-2	26241H13000H000	GEAR, KICK STARTER DRIVE	1	
1-3	21656H12000H000	WASHER	1	
1-4	24149H12010H000	CLIP	2	
1-5	26234H12000H000	SPRING, KICK STARTER RETAINER	1	
1-6	26282H13000H000	RATCHET, KICK STARTER DRIVEN GR	1	
1-7	26235H12000H000	SPRING, KICK STARTER IDLE FRICTION	1	
1-8	21656H12010H000	WASHER	1	
1-9	26226H12000H000	SPRING, RELEASE	1	
1-10	26225H12000H000	SEAT, RELEASE SPRING	1	
1-11	24149H12020H000	CLIP	1	
2	09285H13010H000	SEAL, OIL	1	
3	26300H56000H000	LEVER ASSY, KICK STARTER	1	
4	01500-0825A-000	BOLTS, HEXAGON HEAD	1	

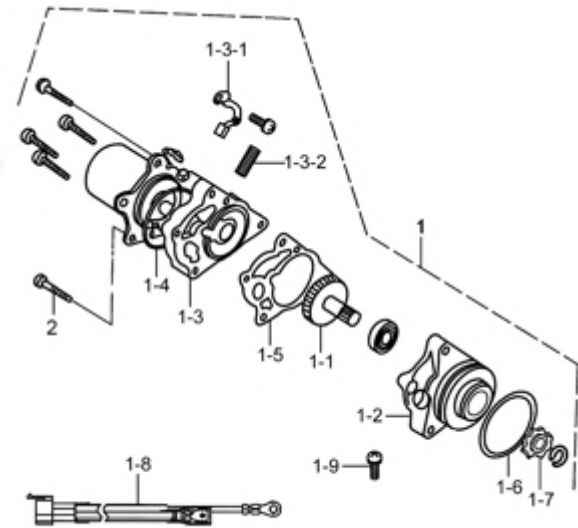
2



Fig. 17

**Fig.17 STARTING MOTOR (X01-S170-0009)**

REF. No.	PART No.	DESCRIPTION	Q' TY	REMARKS
1	31100H56002H000	MOTOR ASSY, STARTING	1	
1-1	12610H52100H000	SHAFT COMP, GEAR	1	
1-2	31160H56000H000	COVER ASSY, GEAR	1	
1-3	31150H52100H000	COVER ASSY, FRONT	1	
1-3-1	31133H52100H000	BRUSH, STARTER MOTOR, MINUS	1	
1-3-2	31135H52100H000	SPRING, STARTER MOTOR BRUSH	2	
1-4	31156H52100H000	O-RING	1	
1-5	31158H52100H000	GASKET	1	
1-6	09280H52100H000	O-RING	1	
1-7	12741H52100H000	SPROCKET	1	
1-8	33810H56001H000	WIRE, STARTER MOTOR	1	
1-9	02112-3406A-000	CROSS RECESSED HEAD SCREW	1	
2	01547-0650A-000	BOLTS, HEXAGON HEAD FLANGE	3	



3



Fig. 18

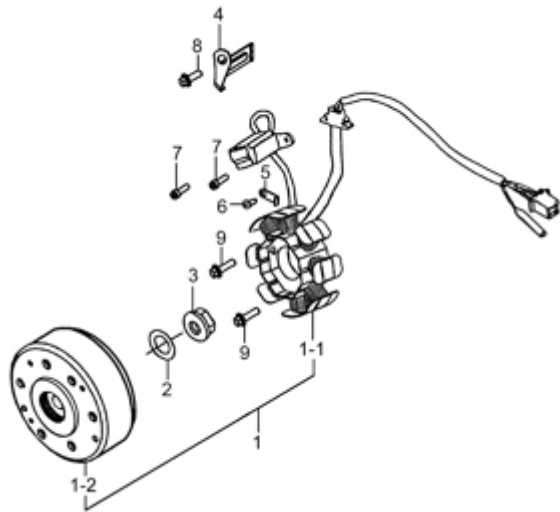


Fig.18 MAGNETO (X01-S180-0006)

REF. No.	PART No.	DESCRIPTION	Q' TY	REMARKS
1	32100H56000H000	MAGNETO ASSY	1	
1-1	32101H51300H000	STATOR ASSY	1	
1-2	32102H52100H000	ROTOR ASSY	1	
2	32113H35000H000	WASHER	1	
3	32114H12000H000	NUT, MAGNETO	1	
4	32115H12000H000	PLATE, WIRE PRESSURE	1	
5	32116H12020H000	PLATE, TRIGGER WIRE PRESSURE	1	
6	02142-0506A-000	CROSS RECESSED HEAD SCREW	1	
7	07130-0512A-000	HEXAGON SOCKET HEAD CAP SCREW	2	
8	01547-0616A-000	BOLT	1	
9	01547-0620A-000	BOLT	2	

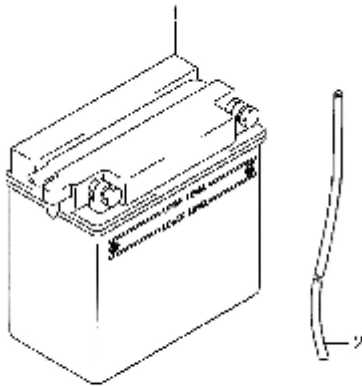
3



Fig. 19

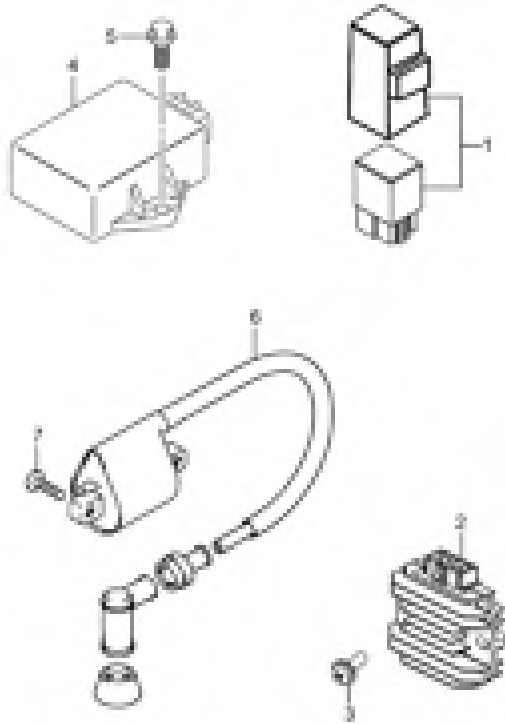
**Fig.19 BATTERY (X01-S190-0011)**

REF. No.	PART No.	DESCRIPTION	Q' TY	REMARKS
1	33611H23612H000	BATTERY	1	
2	33680H56010H000	HOSE, BATTERY EXHAUST	1	



3

Fig. 20



**Fig.20 ELECTRICAL (X01-S200-0008)**

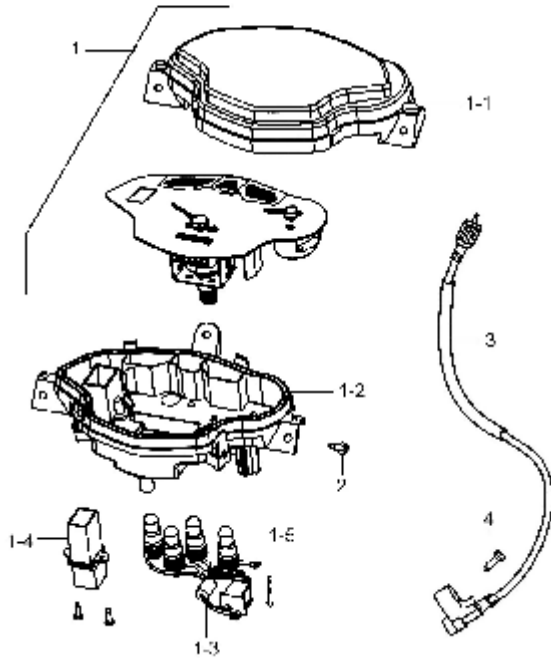
REF. No.	PART No.	DESCRIPTION	Q' TY	REMARKS
1	31800H50000H000	RELAY ASSY, STARTINGMOTOR	1	
2	32800H51022H000	RECTIFIER ASSY	1	
3	09136H06155H000	SCREW WITH WASHER	2	
4	32900H51311H000	IGNITER ASSY	1	
5	01550-0616B-000	BOLT	2	
6	33410H51310H000	COIL ASSY, IGNITION	1	
7	02112-7520A-000	SCREW	2	

**3**

Fig. 21

Fig.21 SPEEDOMETER (X01-S210-0010)

REF. No.	PART No.	DESCRIPTION	Q' TY	REMARKS
1	34100H56001H000	SPEEDOMETER ASSY	1	
1-1	34150H56000H000	HOOD, SPEEDOMETER	1	
1-2	34111H56000H000	CASE, SPEEDOMETER, LOWER	1	
1-3	34173H56000H000	WIRE HARNESS, SPEEDOMETER	1	
1-4	34500H56000H000	ASSY, GEAR SHIFT DISPLAY	1	
1-5	09471-12077-000	BULB	4	12V 2W T10
2	03541-0516B-000	SCREW	3	
3	34910H7E000H000	CABLE ASSY, SPEEDOMETER	1	
4	02122-0516B-000	CROSS RECESSED HEAD SCREW	1	



3

Fig. 22

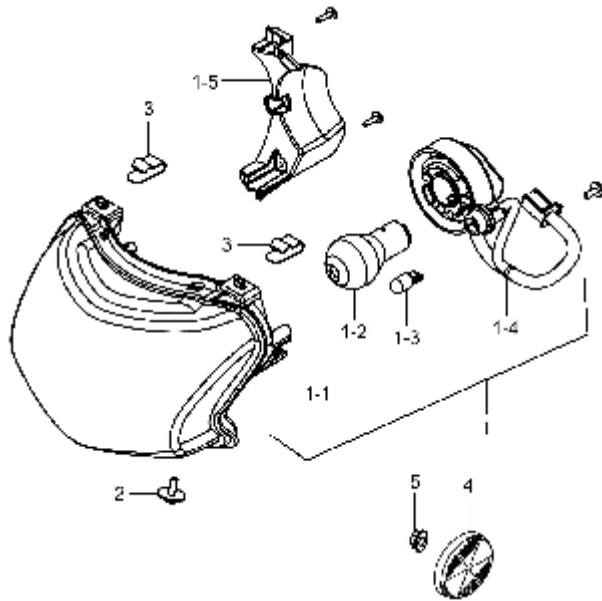


Fig.22 HEADLAMP (X01-S220-0011)

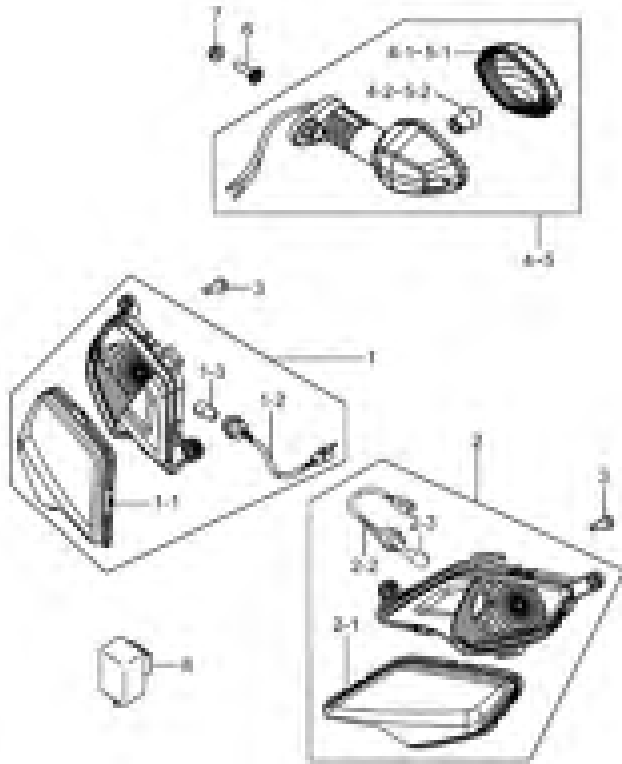
REF. No.	PART No.	DESCRIPTION	Q'TY	REMARKS
1	35100H56000H000	HEADLAMP ASSY	1	
1-1	35121H56000H000	UNIT, HEADLAMP	1	
1-2	09471-12020-000	BULB, HEADLAMP	1	12V 35/35W
1-3	09471-12081-000	BULB, POSITION LAMP	2	12V 5W
1-4	35171H56000H000	CORD, HEADLAMP	1	
1-5	35175H56000H000	PLATE WATERPROOF	1	
2	09136-05051-000	SCREW	1	
3	35194H51000H000	CLAMP, HEAD LAMP	2	
4	35950-04H01-000	REFLECTOR ASSY, FRONT SIDE	2	
5	08316-1005B-000	NUT	2	

3

Fig. 23

Fig.23 TURN SIGNAL LAMP (X01-S230-0017)

REF. No.	PART No.	DESCRIPTION	Q' TY	REMARKS
1	35601H56000H000	LAMP ASSY, FRONT TURNSIGNAL, R	1	
1-1	35612H56000H000	LENS, FRONT TURNSIGNAL, R	1	
1-2	35618H56000H000	CORD COMP, FRONT TURNSIGNAL, R	1	
1-3	09471-12177-000	BULB (12V 10W)	1	12V R10W
2	35602H56000H000	LAMP ASSY, FRONT TURNSIGNAL, L	1	
2-1	35632H56000H000	LENS, FRONT TURNSIGNAL, L	1	
2-2	35638H56000H000	CORD COMP, FRONT TURNSIGNAL, L	1	
2-3	09471-12177-000	BULB (12V 10W)	1	12V R10W
3	03541-0412B-000	SCREW	4	
4	35603H56000H000	LAMP ASSY, REAR TURNSIGNAL, R	1	
4-1	35652H56000H000	LENS, REAR TURNSIGNAL, R	1	
4-2	09471-12177-000	BULB (12V 10W)	1	12V R10W
5	35604H56000H000	LAMP ASSY, REAR TURNSIGNAL, L	1	
5-1	35672H56000H000	LENS, REAR TURNSIGNAL LAMP, L	1	
5-2	09471-12177-000	BULB (12V 10W)	1	12V R10W
6	02112-1520B-000	CROSS RECESSED HEAD SCREW	2	
7	08316-1005B-000	NUT	2	
8	38610-04H01-000	RELAY ASSY, TURNSIGNAL	1	



3

Fig. 24

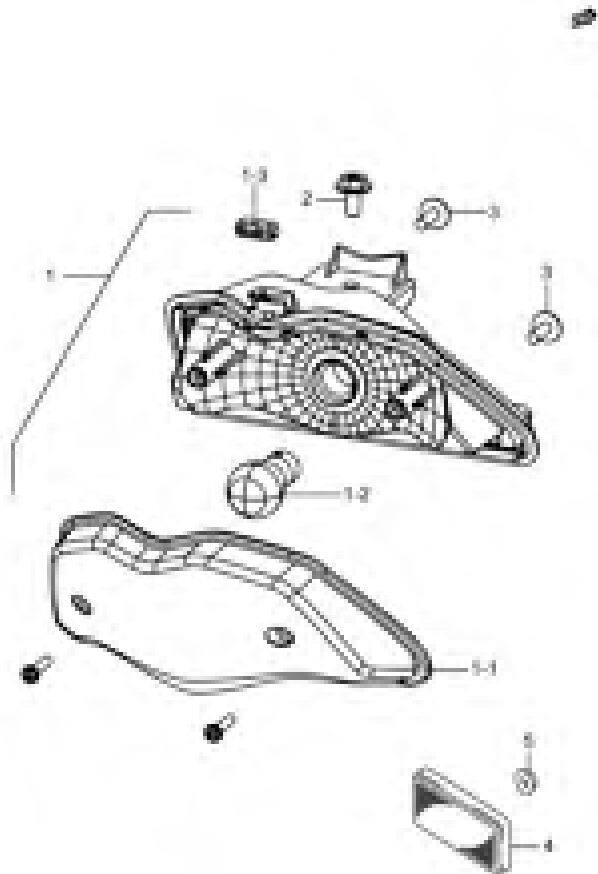


Fig.24 REAR COMBINATION LAMP (X01-S240-0009)

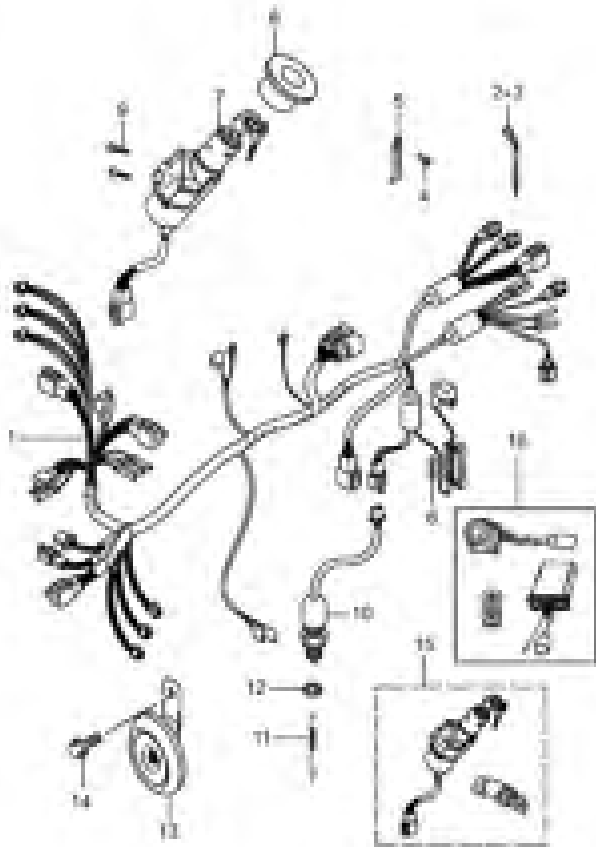
REF. No.	PART No.	DESCRIPTION	Q' TY	REMARKS
1	35710H56000H000	LAMP ASSY, REAR COMB	1	
1-1	35712H56000H000	LENS, REAR COMB	1	
1-2	09471-12128-000	BULB (12V, 21/5W)	1	12V P21/5W
1-3	35764H2E000H000	CUSHION, REAR COMB, INNER	1	
2	09136H06153H000	SCREW, BOX	1	
3	35151-21J00-000	SCREW, HEADLAMP	2	
4	35970-04H01-000	REFLEX REFLECTOR ASSY, REAR	1	
5	08316-1005B-000	NUT	1	

3

Fig. 25

Fig.25 WIRING HARNESS (X01-S250-0019)

REF. No.	PART No.	DESCRIPTION	Q' TY	REMARKS
1	36610H56000H000	HARNESS WIRING	1	
2	09407-14403-000	CLAMP, FUEL HOSE	3	L=125
3	09407-25401-000	CLAMP, WIRING HARNESS	2	L=235
4	03511-0516B-000	SCREW	1	
5	09404-06433-000	CLAMP	1	
6	09481-15001-000	FUSE	1	
7	37100H51301H000	LOCK ASSY, STEERING	1	
8	37155H51301H000	CAP, STEERING LOCK	1	
9	09125H06098H000	SCREW	2	
10	37740H50202H000	SWITCH ASSY, STOP LAMP	1	
11	09443H05002H000	SPRING, TENSION	1	
12	37741H50200H000	NUT, STOP LAMP SW	1	
13	38500H51011H000	HORN ASSY	1	
14	01550-0612A-000	BOLT	1	
15	37011H51330H000	LOCK SET	1	
16	38840H2A010H000	ALARM ASSY	1	PL



3



Fig. 26

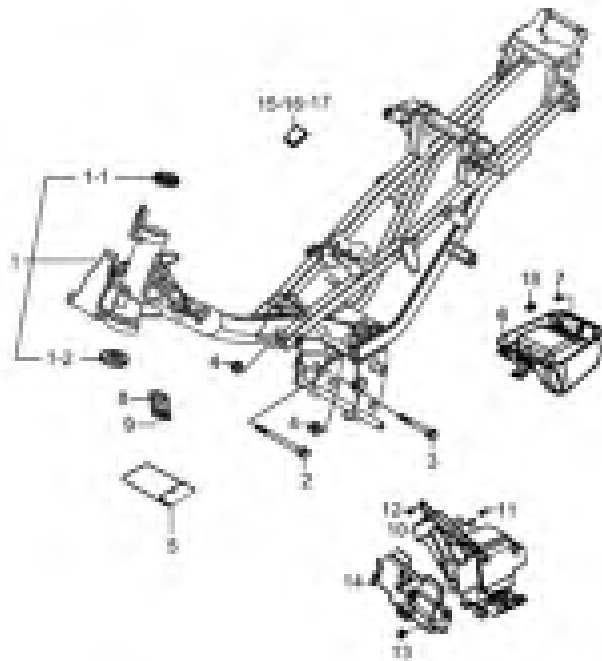


Fig.26 FRAME (X01-S260-0014)

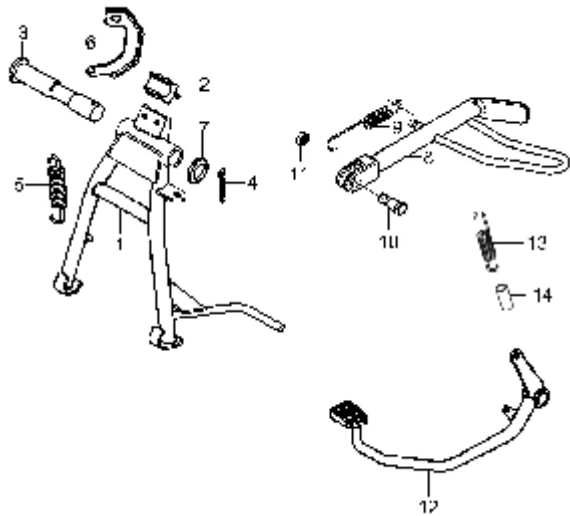
REF. No.	PART No.	DESCRIPTION	Q'TY	REMARKS
1	41100H56Y01H000	FRAME SET	1	
1-1	51611H50000H000	RACE, INNER UPPER	1	
1-2	51612H50000H000	RACE, INNER LOWER	1	
2	09100H08001H000	BOLT	1	
3	09100H08002H000	BOLT	1	
4	08319-3108A-000	NUT	2	
5	09800H20015H000	TOOL ASSY	1	
6	47341H56000H000	TOOL BOX	1	
7	09139H06083H000	SCREW	1	
8	68311H56100H000	PLATE, ID	1	
9	09229H03001H000	RIVET, BLIND	2	
10	41541H50201H000	BODY, BATTERY BOX	1	
11	09148H06001H000	NUT, BOX	2	
12	09111-06066-000	BOLT, FIXED FR FENDER	3	
13	09136H06153H000	SCREW, BOX	1	
14	48125H50200H000	LID, BATTERY BOX	1	
15	41569H50200H000	SEPARATOR	1	90X75X5
16	44256H12600H000	SEPARATOR	1	90X50X5
17	44281-04HA0-000	CUSHION, FUEL TANK	1	30X30X3
18	47433H50000H000	RUBBER	1	

4

Fig. 27

Fig.27 STAND (X01-S270-0007)

REF. No.	PART No.	DESCRIPTION	Q' TY	REMARKS
1	42100H50001H000	STAND, CENTER	1	
2	42181H50002H000	CUSHION	1	
3	42211H50000H000	SPACE, CENTER STAND	1	
4	04111-3028A-000	COTTER PIN	1	
5	09443H16001H000	SPRING, TENSION	1	
6	42112H50000H000	PLATE	1	
7	43142H11200H000	WASHER	1	
8	42310H51000H000	STAND COMP, PROP	1	
9	09443H15203H000	SPRING, TENSION	1	
10	42551H50000H000	BOLT	1	
11	09140-10043-000	NUT, PROP STAND	1	
12	43110H56100H000	PEDAL COMP, BRAKE	1	
13	09443H14004H000	SPRING, TENSION	1	
14	43142H21302H000	HOSE, RUBBER	1	



4

Fig. 28

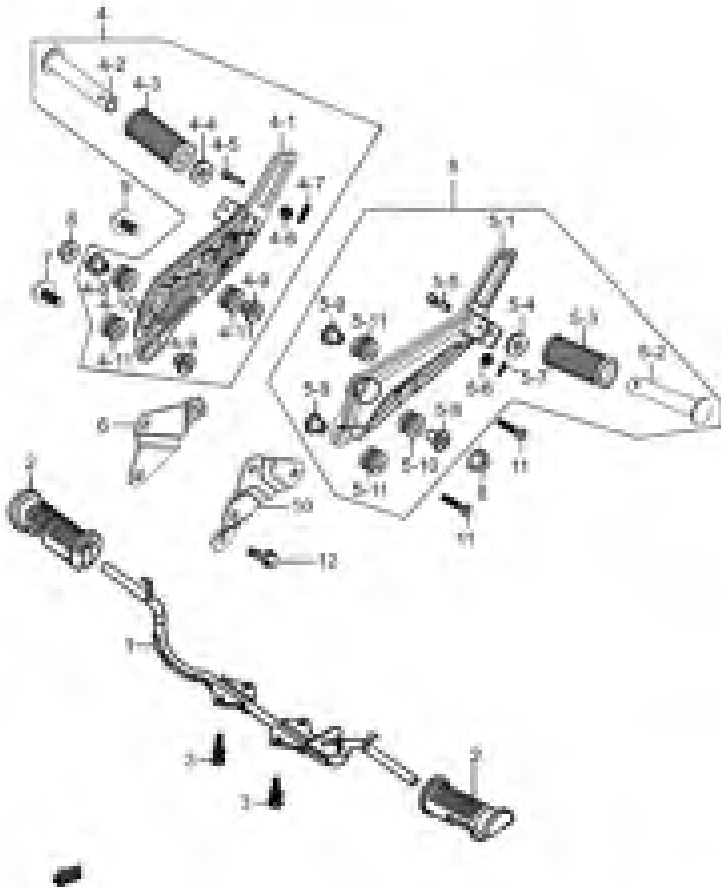


Fig.28 FOOTREST (X01-S280-0012)

REF. No.	PART No.	DESCRIPTION	Q'TY	REMARKS
1	43510H51040H000	BAR COMP, FRONT FOOTREST	1	
2	43551H51020H000	RUBBER, FRONT FOOTREST	2	
3	01580-0825A-000	HEXAGON HEAD BOLT	4	
4	43600H56001H000	FOOTREST ASSY, PILLION, R	1	
4-1	43621H56000H000	HOLDER, PILLION FOOTREST, R	1	
4-2	43610-03001-000	BAR COMP, PILLION FOOTREST	1	
4-3	43612-33201-000	RUBBER, PILLION FOOTREST	1	
4-4	09160-19006-000	WASHER, PILLION FOOTREST	1	
4-5	43641H22500H000	PIN, PILLION FOOTREST	1	
4-6	08322-0106A-000	WASHER, PLAIN	1	
4-7	04111-2015A-000	COTTER PIN	1	
4-8	09180H11203H000	BUSH, MIDDLE	1	
4-9	09180H08204H000	BUSH, SIDE	2	
4-10	43643H50000H000	PAD, MIDDLE	1	
4-11	43644H50000H000	PAD, SIDE	2	
5	43700H56001H000	FOOTREST ASSY, PILLION, L	1	
5-1	43721H56000H000	HOLDER, PILLION FOOTREST, L	1	
5-2	43610-03001-000	BAR COMP, PILLION FOOTREST	1	
5-3	43612-33201-000	RUBBER, PILLION FOOTREST	1	
5-4	09160-19006-000	WASHER, PILLION FOOTREST	1	
5-5	43641H22500H000	PIN, PILLION FOOTREST	1	
5-6	08322-0106A-000	WASHER, PLAIN	1	
5-7	04111-2015A-000	COTTER PIN	1	
5-8	09180H11203H000	BUSH, MIDDLE	1	
5-9	09180H08204H000	BUSH, SIDE	2	
5-10	43643H50000H000	PAD, MIDDLE	1	
5-11	43644H50000H000	PAD, SIDE	2	
6	43640H50211H000	LINK PLATE COMP, REAR, RH	1	
7	09116H08001H000	SCREW, MUFFLER, FRONT	1	

4

Fig. 28

Fig.28 FOOTREST (X01-S280-0012)

REF. No.	PART No.	DESCRIPTION	Q' TY	REMARKS
8	08316-1010A-000	NUT	2	
9	09116H08002H000	SCREW, MUFFLER, REAR	1	
10	43650H50000H000	PLATE, REAR LH	1	
11	01500-0825A-000	BOLTS, HEXAGON HEAD	2	
12	01550-0820A-000	BOLTS, HEXAGON HEAD FLANGE	1	

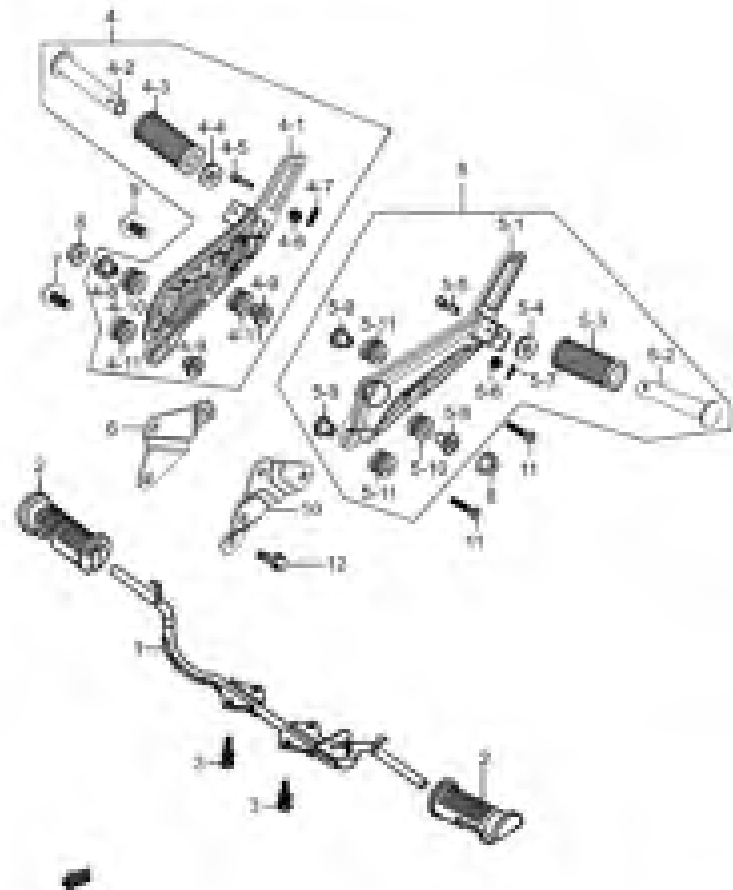


Fig. 29

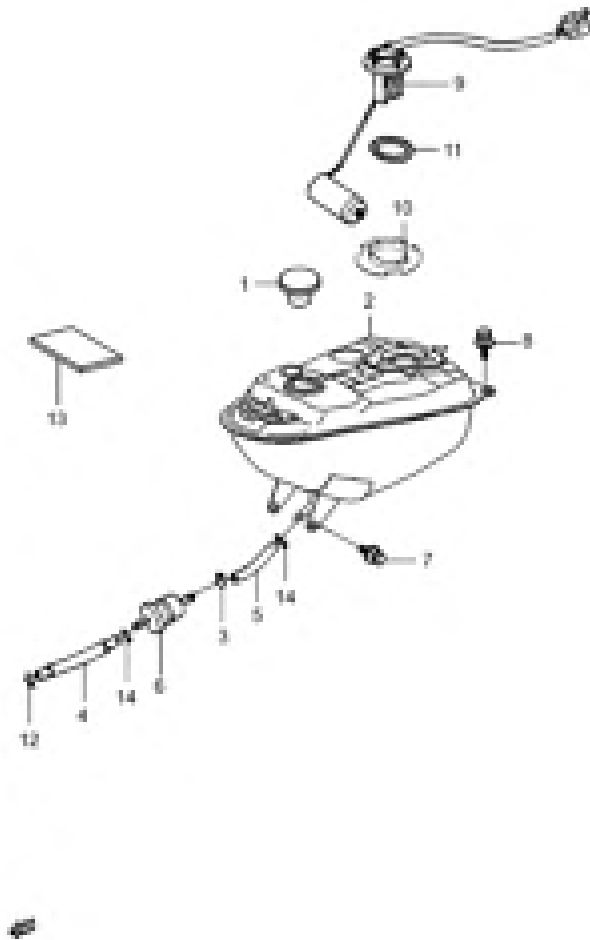


Fig.29 FUEL TANK (X01-S290-0009)

REF. No.	PART No.	DESCRIPTION	Q'TY	REMARKS
1	44200H51010H000	CAP ASSY, FUEL TANK	1	
2	44110H56101H000	TANK COMP, FUEL	1	
3	09401-08414-000	CLIP	1	
4	44198H56000H000	HOSE, OUTLET	1	
5	44199H50201H000	TUBE, FILLER INLET	1	
6	44360H50000H000	FILTER, FUEL	1	
7	01550-0612B-000	BOLT	2	
8	01550-0816A-000	HEXAGON BOLT WITH FLANGE	2	
9	34810H56000H000	GAUGE ASSY, FUEL LEVEL SENDER	1	
10	34886H50000H000	PLATE, FUEL LEVEL SENDER GAUGE	1	
11	34825H85300H000	O-RING, FUEL LEVEL SENDER	1	
12	09401H09001H000	CLIP	1	
13	44256H12600H000	SEPARATOR	3	
14	09401-09101-000	CLAMP	2	

4

Fig. 30

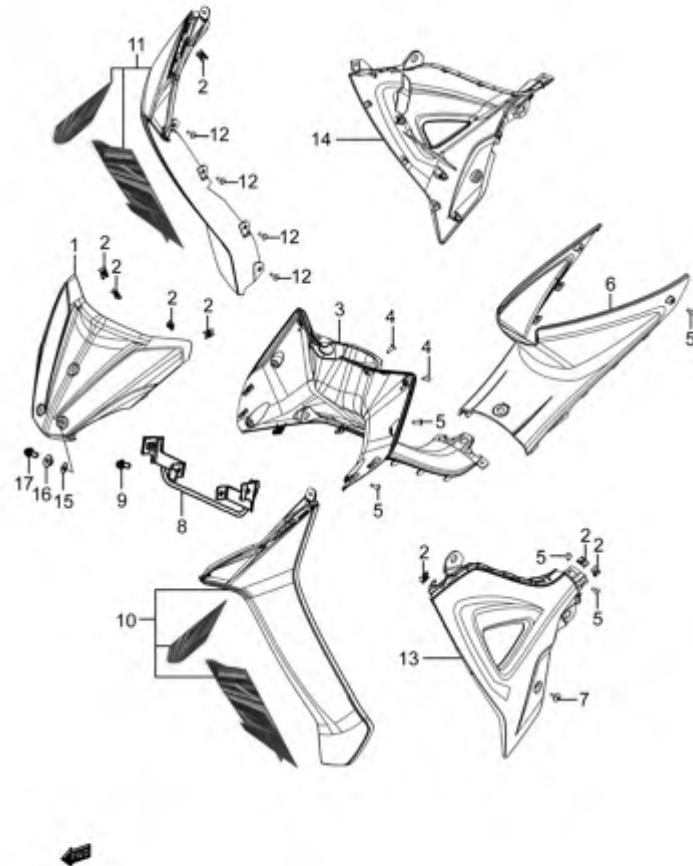


Fig.30 LEG SHIELD (X01-S305-0041)

REF. No.	PART No.	DESCRIPTION	Q' TY	REMARKS
1	48111H56000H504	SHIELD, LEG FRONT (BLACK)	1	
1	48111H56000H117	SHIELD, LEG FRONT (RED)	1	
1	48111H56000H819	SHIELD, LEG FRONT (GRAY)	1	
1	48111H56000H616	SHIELD, LEG FRONT (BLUE)	1	
1	48111H56000H108	SHIELD, LEG FRONT (RED)	1	
1	48111H56000H815	SHIELD, LEG FRONT (SILVERY)	1	
1	48111H56000H911	SHIELD, LEG FRONT (Crystal White)	1	
2	09148-05L08-000	NUT	12	
3	48131H56000H000	SHIELD, LEG CENTER	1	
4	03241-0516B-000	SCREW	4	
5	03241-0512B-000	SCREW	10	
6	48141H56000H000	LID, MAINTENANCE	1	
7	09139H06083H000	SCREW	2	
8	48140H50200H000	BRACE COMP, LEG SHIELD	1	
9	01550-0616A-000	BOLT	2	
10	48031H56020HF01	SHIELD SET, LEG, L (BLACK)	1	
10	48031H56020HF02	SHIELD SET, LEG, L (RED)	1	
10	48031H56020HF03	SHIELD SET, LEG, L (GRAY)	1	
10	48031H56020HF04	SHIELD SET, LEG, L (BLUE)	1	
10	48031H56020HF05	SHIELD SET, LEG, L (RED)	1	
10	48031H56020HF06	SHIELD SET, LEG, L (SILVERY)	1	
10	48031H56020HF07	SHIELD SET, LEG, L (WHITE)	1	
11	48021H56000HF01	SHIELD SET, LEG, R (BLACK)	1	
11	48021H56000HF02	SHIELD SET, LEG, R (RED)	1	
11	48021H56000HF03	SHIELD SET, LEG, R (GRAY)	1	
11	48021H56000HF04	SHIELD SET, LEG, R (BLUE)	1	
11	48021H56000HF05	SHIELD SET, LEG, R (RED)	1	
11	48021H56000HF06	SHIELD SET, LEG, R (SILVERY)	1	
11	48021H56000HF07	SHIELD SET, LEG, R (Crystal White)	1	

Fig. 30

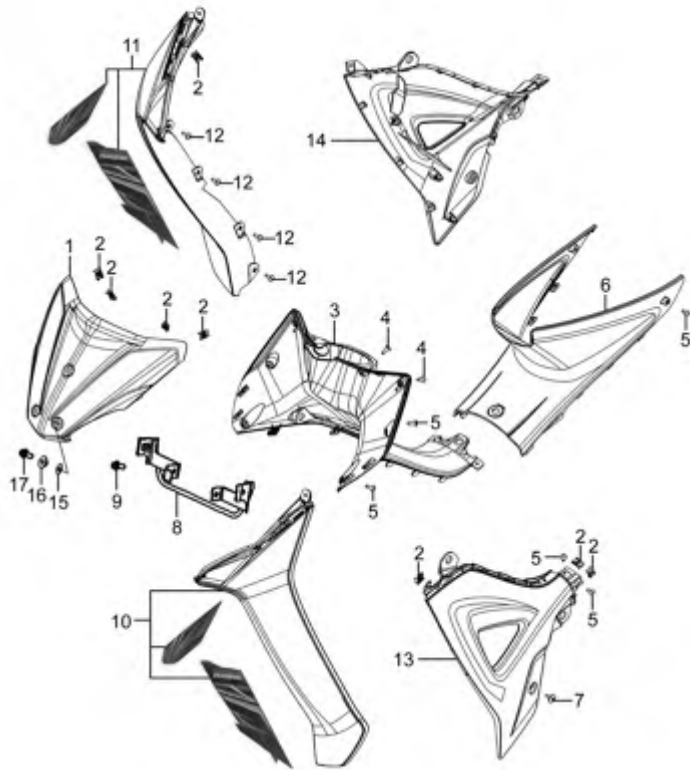


Fig.30 LEG SHIELD (X01-S305-0041)

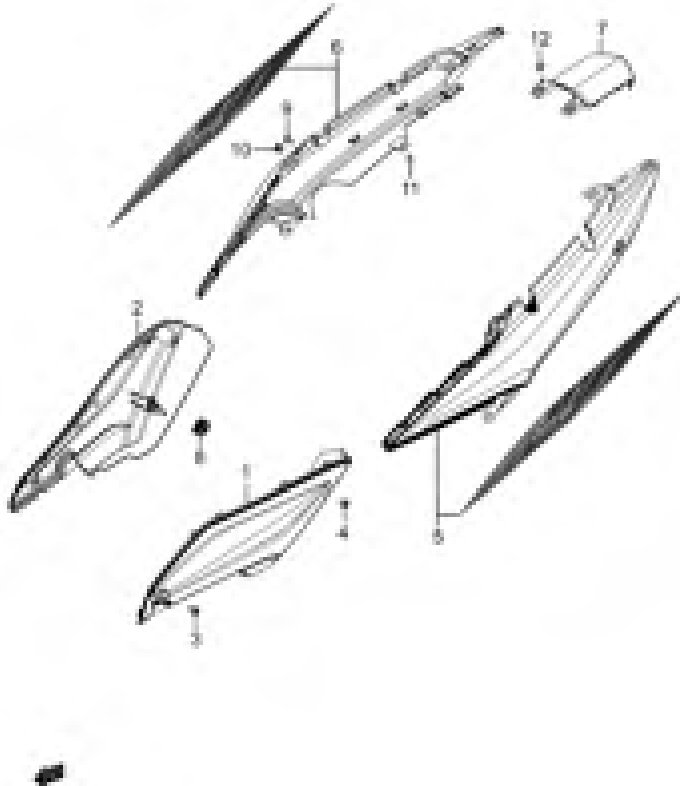
REF. No.	PART No.	DESCRIPTION	Q' TY	REMARKS
12	09136H04003H000	SCREW WITH WASHER	8	
13	48122H56001H000	SHIELD, LEG INNER, L	1	
14	48112H56001H000	SHIELD, LEG INNER, R	1	
15	51875H51000H000	CUSHION, HEAD COVER RUBBER	3	
16	09180H06207H000	BUSH	3	
17	01550-0616B-000	BOLT	3	

4

Fig. 31

Fig.31 FRAME COVER (X01-S310-0029)

REF. No.	PART No.	DESCRIPTION	Q' TY	REMARKS
1	47221H56000H000	COVER, FRAME FRONT, L	1	
2	47121H56000H000	COVER, FRAME FRONT, R	1	
3	09111H06004H000	BOLT	2	
4	09119H06002H000	BOLT	2	
5	47021H56000HF01	COVER SET, FRAME, L (BLACK)	1	
5	47021H56000HF02	COVER SET, FRAME, L (RED)	1	
5	47021H56000HF03	COVER SET, FRAME, L (GRAY)	1	
5	47021H56000HF04	COVER SET, FRAME, L (BLUE)	1	
5	47021H56000HF05	COVER SET, FRAME, L (RED)	1	
5	47021H56000HF06	COVER SET, FRAME, L (SILVERY)	1	
5	47021H56000HF07	COVER SET, FRAME, L (Crystal White)	1	
6	47011H56000HF01	COVER SET, FRAME, R (BLACK)	1	
6	47011H56000HF02	COVER SET, FRAME, R (RED)	1	
6	47011H56000HF03	COVER SET, FRAME, R (GRAY)	1	
6	47011H56000HF04	COVER SET, FRAME, R (BLUE)	1	
6	47011H56000HF05	COVER SET, FRAME, R (RED)	1	
6	47011H56000HF06	COVER SET, FRAME, R (SILVERY)	1	
6	47011H56000HF07	COVER SET, FRAME, R (Crystal White)	1	
7	47311H56000H504	COVER, FRAME CENTER (BLACK)	1	
7	47311H56000H117	COVER, FRAME CENTER (RED)	1	
7	47311H56000H819	COVER, FRAME CENTER (GRAY)	1	
7	47311H56000H616	COVER, FRAME CENTER (BLUE)	1	
7	47311H56000H108	COVER, FRAME CENTER (RED)	1	
7	47311H56000H815	COVER, FRAME CENTER (SILVERY)	1	
7	47311H56000H911	COVER, FRAME CENTER (Crystal White)	1	
8	47433H50000H000	RUBBER	2	
9	09139H06083H000	SCREW	2	
10	09148-05L08-000	NUT	2	



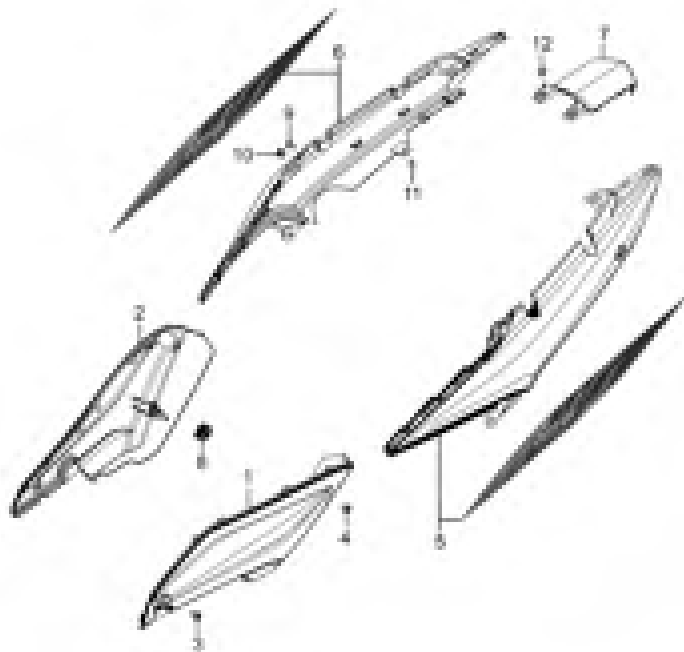
4



Fig. 31

Fig.31 FRAME COVER (X01-S310-0029)

REF. No.	PART No.	DESCRIPTION	Q' TY	REMARKS
11	03241-0512B-000	SCREW	2	
12	01550-0612B-000	BOLT	2	

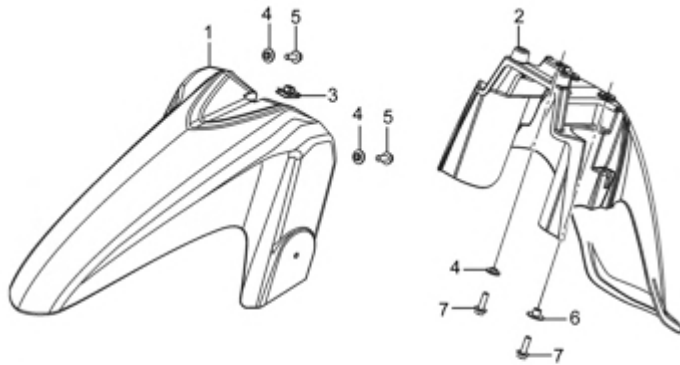


4

Fig. 32

Fig.32 FRONT FENDER (X01-S320-0004)

REF. No.	PART No.	DESCRIPTION	Q' TY	REMARKS
1	53111H56000H504	FENDER, FRONT FRONT (BLACK)	1	
1	53111H56000H117	FENDER, FRONT FRONT (RED)	1	
1	53111H56000H819	FENDER, FRONT FRONT (GRAY)	1	
1	53111H56000H616	FENDER, FRONT FRONT (BLUE)	1	
1	53111H56000H108	FENDER, FRONT FRONT (RED)	1	
1	53111H56000H815	FENDER, FRONT FRONT (SILVERY)	1	
1	53111H56000H911	FENDER, FRONT FRONT (Crystal White)	1	
2	53211H56000H000	FENDER, FRONT REAR	1	
3	93162-37G00-000	NUT	1	
4	09169-06071-000	WASHER, FRONT LEG SHIELD	3	
5	01550-0616A-000	BOLT	2	
6	09169-06065-000	SPACER, BATTERY HOLDER	2	
7	01550-0620A-000	BOLTS, HEXAGON HEAD FLANGE	3	



4



Fig. 33

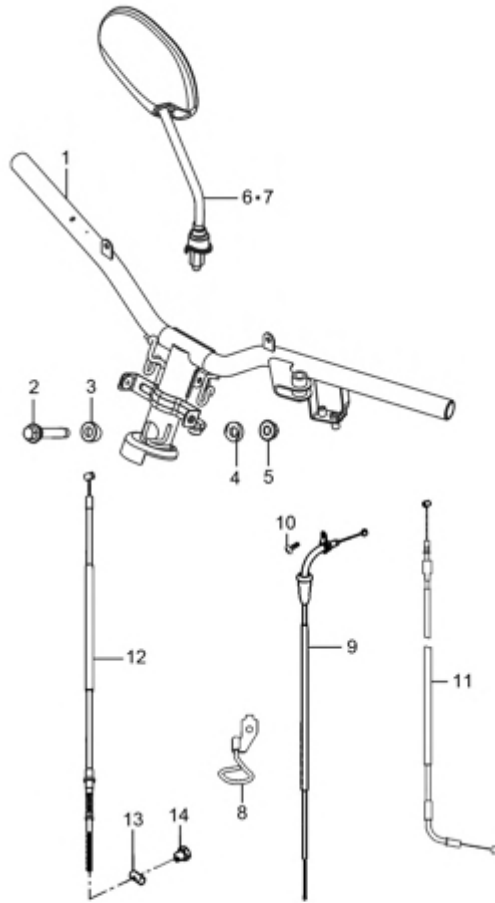


Fig.33 HANDLEBAR (X01-S330-0014)

REF. No.	PART No.	DESCRIPTION	Q' TY	REMARKS
1	56110H56001H000	HANDLEBAR COMP	1	
2	09103H10134H000	BOLT	1	
3	51358H52100H000	STOPPER, HANDLEBAR, FR	1	
4	51368H52100H000	STOPPER, HANDLEBAR, RR	1	
5	08319-3110A-000	NUT	1	
6	56500H56000H000	MIRROR ASSY, REAR VIEW, R	1	
7	56600H56000H000	MIRROR ASSY, REAR VIEW, L	1	
8	58620H56000H000	GUIDE COMP, FRONT BRAKE CABLE	1	
9	58300H56001H000	CABLE ASSY, THROTTLE	1	
10	02112-0512B-000	CROSS RECESSED HEAD SCREW	1	
11	58410H56000H000	CABLE COMP, STARTER	1	
12	58100H56000H000	CABLE ASSY, FRONT BRAKE	1	
13	09209H12003H000	PIN	1	
14	09150H06002H000	NUT	1	

4

Fig. 34

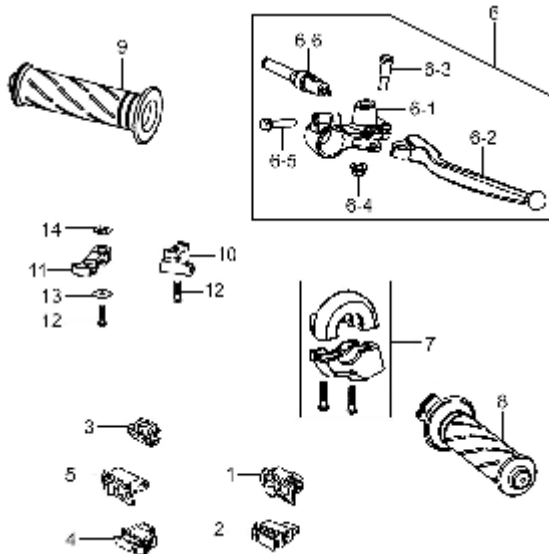


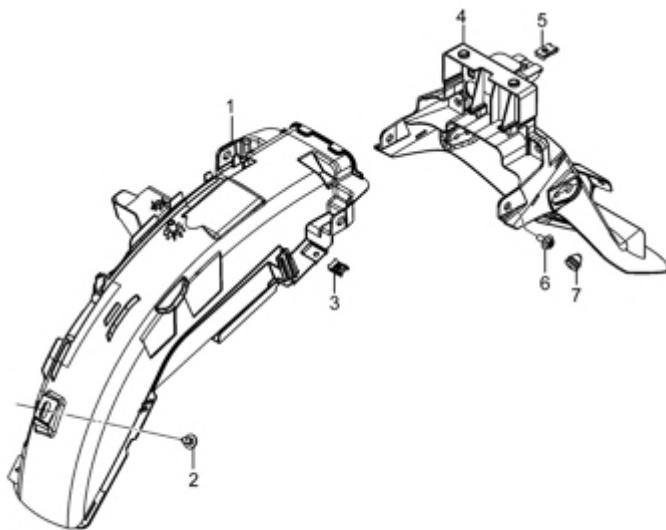
Fig.34 HANDLE SWITCH (X01-S340-0008)

REF. No.	PART No.	DESCRIPTION	Q'TY	REMARKS
1	37340-20E00-000	SWITCH ASSY, LIGHTING	1	
2	37310H51010H000	SWITCH ASSY, STARTER	1	
3	37420H51010H000	SWITCH ASSY, DIMMER	1	
4	37520H51010H000	SWITCH ASSY, HORN	1	
5	37510-10E00-000	SWITCH, TURN	1	
6	57300H56001H000	LEVER ASSY, FR BRAKE & SWITCH	1	
6-1	57311H56001H000	HOLDER, BRAKE LEVER, R	1	
6-2	57421-09G00-000	LEVER, BRAKE	1	
6-3	57431-09GA0-000	BOLT, BRAKE LEVER PIVOT	1	
6-4	08319-2106B-000	U-NUT	1	
6-5	01547-0628B-000	BOLTS, HEXAGON HEAD FLANGE	1	
6-6	57470-20E00-000	SWITCH ASSY, BRAKE	1	
7	57100H51000H000	CASE ASSY, THROTTLE	1	
8	57110H51010H000	GRIP COMP, THROTTLE	1	
9	57211H51000H000	GRIP, L	1	
10	58722H51000H000	GUIDE, LIMIT AIR CABLE	1	
11	58721H51000H000	LEVER, CHOKE	1	
12	02112-3512B-000	CROSS RECESSED HEAD SCREW	2	
13	09160-05037-000	WASHER	1	
14	09164H08001H000	WASHER	1	

Fig. 35

Fig.35 REAR FENDER (X01-S350-0009)

REF. No.	PART No.	DESCRIPTION	Q' TY	REMARKS
1	63112H56000H000	BODY, REAR FENDER, FRONT	1	
2	09111-06066-000	BOLT, FIXED FR FENDER	1	
3	09148-05L08-000	NUT	2	
4	63211H56000H000	REAR PART, REAR FENDER	1	
5	09148H06001H000	NUT, BOX	1	
6	09111-06061-000	SCREW, FRONT FENDER	2	
7	45146H52100H000	CUSHION	1	

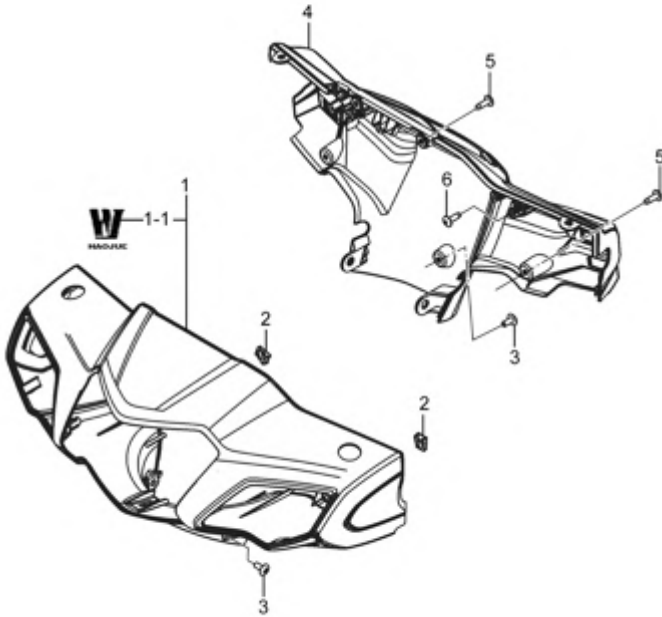


4

Fig. 36

Fig.36 HOUSING,HEADLAMP (X01-S355-0013)

REF. No.	PART No.	DESCRIPTION	Q' TY	REMARKS
1	56031H56000HF01	COVER SET, HANDLE FRONT (BLACK)	1	
1	56031H56000HF02	COVER SET, HANDLE FRONT (RED)	1	
1	56031H56000HF03	COVER SET, HANDLE FRONT (GRAY)	1	
1	56031H56000HF04	COVER SET, HANDLE FRONT (BLUE)	1	
1	56031H56000HF05	COVER SET, HANDLE FRONT (RED)	1	
1	56031H56000HF06	COVER SET, HANDLE FRONT (SILVERY)	1	
1	56031H56000HF07	COVER SET, HANDLE FRONT (Crystal White)	1	
1-1	68170H79000HSIL	LOGO (SIL)	1	
1-1	68170H79000HMT1	LOGO (MT1)	1	
2	09148-05038-000	NUT, LEG REAR NO. 2	4	
3	02142-0512B-000	SCREW	3	
4	56321H56000H000	COVER, HANDLE REAR	1	
5	03241-0516B-000	SCREW	4	
6	03541-0516B-000	SCREW	2	



4

Fig. 37

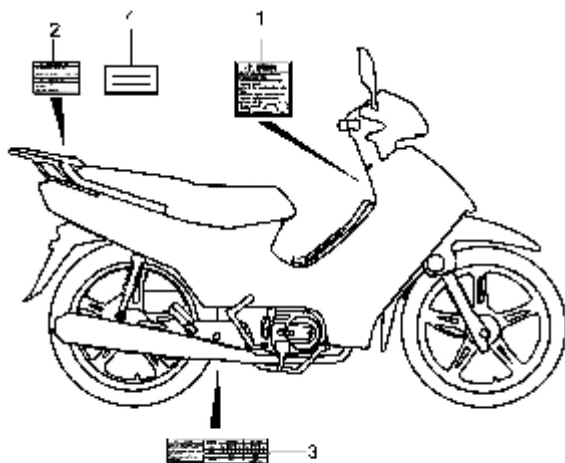


Fig.37 LABEL (X01-S370-0013)

REF. No.	PART No.	DESCRIPTION	Q' TY	REMARKS
1	68319H51030H000	LABEL, GENERAL WARNING	1	
2	68391-45F00-000	LABEL, GENERAL WARNING	1	
3	68332H51010H000	LABEL, TIRE INFORMATION	1	
4	99011H56110H000	MANUAL, OWNER'S	1	

4

Fig. 38

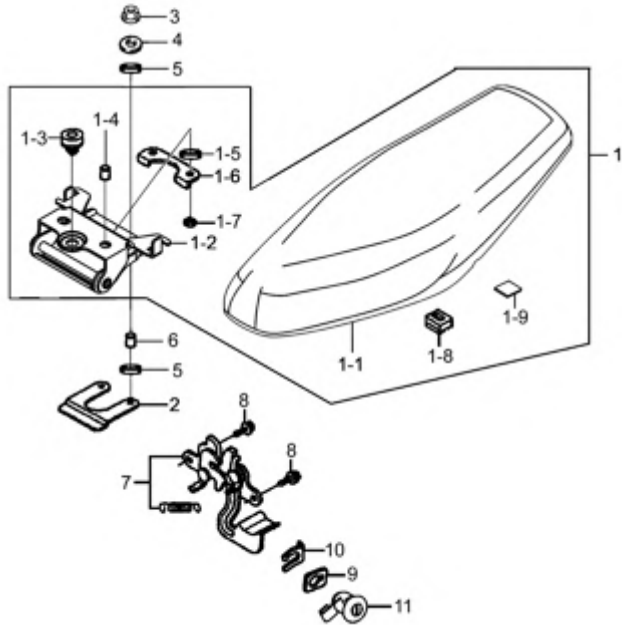


Fig.38 SEAT (X01-S380-0009)

REF. No.	PART No.	DESCRIPTION	Q' TY	REMARKS
1	45011H56030H000	SEAT SET	1	
1-1	45160H56001H000	COVER COMP, SEAT	1	
1-2	45200H50010H000	BRACKET ASSY, SEAT HINGE	1	
1-3	09321H10002H000	CUSHION	1	
1-4	09180-06154-000	SPACER	2	
1-5	45147H50000H000	BUSH	4	
1-6	45252H50000H000	STOPPER, SEAT HINGE BRKT	1	
1-7	08310-0006A-000	NUT	2	
1-8	45148H50000H000	RUBBER	6	
1-9	44281-04HA0-000	CUSHION, FUEL TANK	1	
2	45111H50000H000	ELASTIC PLATE	1	
3	08316-1006B-000	NUT	2	
4	09160H06002H000	WASHER, PLAIN	2	
5	45147H50000H000	BUSH	4	
6	09180-06154-000	SPACER	2	
7	45700H50000H000	BRACKET, STRIKER SUPPORT	1	
8	01550-0612A-000	BOLT	2	
9	95711H50000H000	GUIDE, SEAT LOCK CABLE	1	
10	95721H50000H000	PLATE, SEAT LOCK NO. 2	1	
11	95700H50020H000	LOCK ASSY, SEAT & HELMET	1	

4



Fig. 39

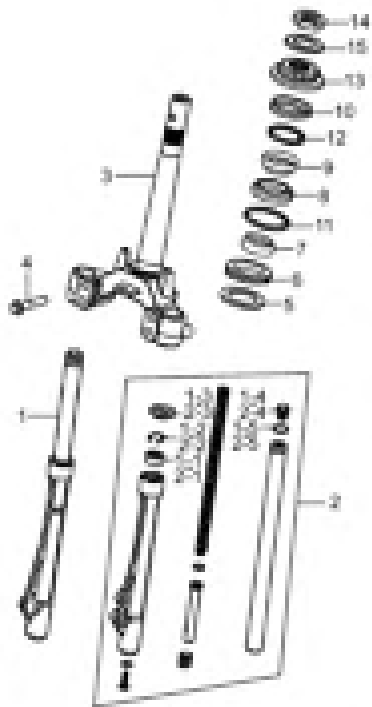


Fig.39 STEERING STEM (X01-S400-0006)

REF. No.	PART No.	DESCRIPTION	Q'TY	REMARKS
1	51103H50001H000	DAMPER ASSY, FRONT FORK RH	1	
1-1	51153H50000H000	OIL SEAL	1	
1-2	51156H50000H000	RING, STOPPER	1	
1-3	51173H50000H000	DUST SEAL	1	
1-4	51351H50000H000	CAP, FRONT FORK	1	
1-5	51117H50000H000	O RING	1	
2	51104H50001H000	DAMPER ASSY, FRONT FORK LH	1	
2-1	51153H50000H000	OIL SEAL	1	
2-2	51156H50000H000	RING, STOPPER	1	
2-3	51173H50000H000	DUST SEAL	1	
2-4	51351H50000H000	CAP, FRONT FORK	1	
2-5	51117H50000H000	O RING	1	
3	51410H56000H000	BRACKET COMP, UNDER	1	
4	01570-1045A-000	HEXAGON HEAD BOLT	4	
5	51625H50000H000	WASHER	1	
6	51626H50000H000	GASKET	1	
7	51622H50000H000	RACE, OUTER LOWER	1	
8	51612H50000H000	RACE, INNER LOWER	1	
9	51611H50000H000	RACE, INNER UPPER	1	
10	51621H50000H000	RACE, OUTER UPPER	1	
11	51660H50000H000	BALLS	1	
12	51650H50000H000	BALLS	1	
13	51630H50001H000	NUT ASSY	1	
14	09140H26001H000	NUT, STEERING STEM	1	
15	09166H26001H000	WASHER, NOTCHED	1	

4

Fig. 40

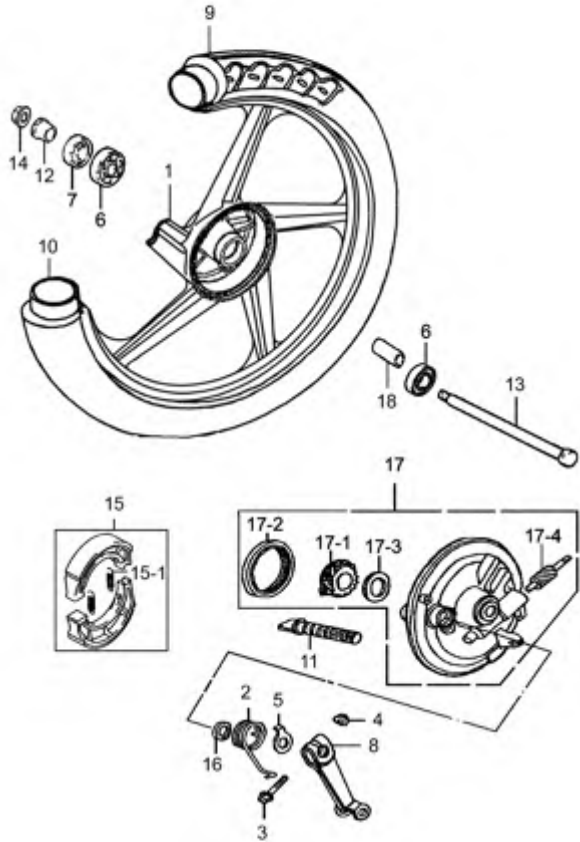


Fig.40 FRONT WHEEL (X01-S410-0021)

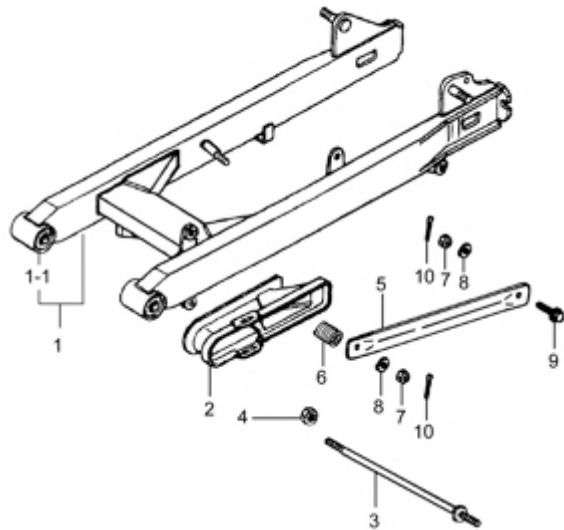
REF. No.	PART No.	DESCRIPTION	Q' TY	REMARKS
1	54110H23A02H000	WHEEL COMP, FRONT	1	
2	54453H50000H000	SPRING	1	
3	01547-0630A-000	BOLT	1	
4	08316-1006A-000	NUT	1	
5	54492H50000H000	PLATE, BRAKE LINING	1	
6	08133-63017-000	BEARING, FRONT HUB	2	
7	54742-36H00-000	SEAL, FRONT HUB	1	
8	54451H50002H000	LEVER, BRAKE CAM	1	
9	55100H23A00H000	TIRE COMP, FRONT	1	
10	55200H50020H000	TUBE ASSY, WHEEL INNER	1	
11	54441H50000H000	SHAFT, BRAKE CAM	1	
12	09180H12206H000	SPACER, AXLE, RH	1	
13	54711H50000H000	AXLE, FRONT	1	
14	08319-3112A-000	U-NUT	1	
15	54400H33Y00H000	SHOE COMP, BRAKE	1	
15-1	55421-36H00-000	SPRING, BRAKE SHOE	2	
16	54443-36H00-000	O RING	1	
17	54200H50000H000	PANEL ASSY, FRONT BRAKE	1	
17-1	54610H50000H000	GEAR, SPEEDOMETER DRIVEN	1	
17-2	54640H50000H000	SEAL	1	
17-3	54614H11200H000	WASHER	1	
17-4	54621H50001H000	DRIVEN GEAR, SPEEDOMETER	1	
18	54731H50200H000	SPACER, FRONT WHEEL BRG	1	

4

Fig. 41

Fig.41 REAR SWINGING ARM (X01-S440-0007)

REF. No.	PART No.	DESCRIPTION	Q' TY	REMARKS
1	61000H56000H000	SWINGINGARM ASSY, REAR	1	
1-1	61200H50000H000	BUSH	2	
2	61273H50200H000	BUFFER, CHAIN TOUCH DEFENSE	1	
3	61211H51001H000	SHAFT, RR SWG ARM PIVOT	1	
4	09140-10043-000	NUT, PROP STAND	1	
5	64310H50000H000	TORQUE LINK, REAR	1	
6	09440H21001H000	SPRING	1	
7	08310-0008A-000	HEXAGON NUT	2	
8	08322-0108A-000	PLAIN WASHER	2	
9	64341H50000H000	BOLT	1	
10	04111-2020A-000	COTTER PIN	2	

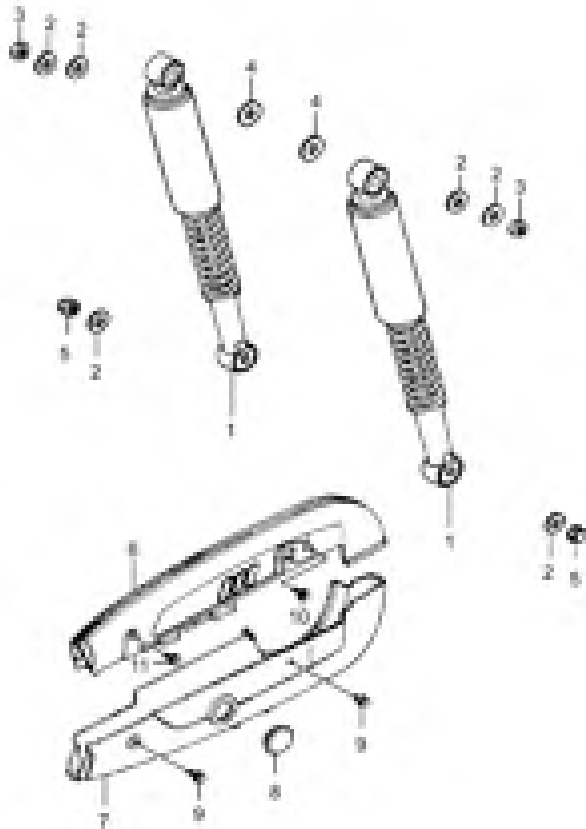


4

Fig. 42

Fig.42 REARSHOCK ABSORBER (X01-S450-0013)

REF. No.	PART No.	DESCRIPTION	Q' TY	REMARKS
1	62100H56000H000	ABSORBER ASSY, REAR SHOCK	2	
2	09160H10001H000	WASHER, PLAIN	6	
3	08310-0010A-000	HEXAGON NUT	2	
4	09160-12090-000	WASHER, RR SHK ABS INNER	2	
5	09145H10001H000	NUT, CAP	2	
6	61310H50001H000	CASE COMP, CHAIN UPPER	1	
7	61320H50000H000	CASE, CHAIN LOWER	1	
8	09250H34001H000	CAP	1	
9	01560-0608A-000	HEXAGON HEAD BOLT	2	
10	01560-0612A-000	HEXAGON HEAD BOLT	1	
11	01560-0606A-000	HEXAGON HEAD BOLT	1	



4

Fig. 43

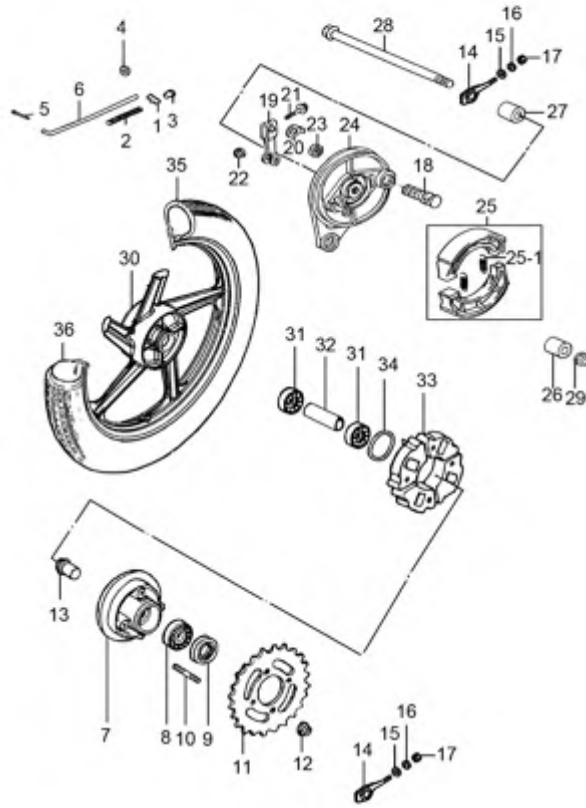


Fig.43 REAR WHEEL (X01-S460-0038)

REF. No.	PART No.	DESCRIPTION	Q'TY	REMARKS
1	09209H12003H000	PIN	1	
2	09440H09008H000	SPRING, COMPRESSION	1	
3	09150H06002H000	NUT	1	
4	08322-0106A-000	WASHER, PLAIN	2	
5	04111-2015A-000	COTTER PIN	1	
6	43310H56000H000	ROD COMP, REAR BRAKE	1	
7	64611H51001H000	DRUM, REAR SPROCKET	1	
8	08143-62037-000	BEARING, SPROCKET DRUM	1	
9	64612H50000H000	SEAL OIL	1	
10	01421-0816B-000	BOLT, STUD	4	
11	64511H56000H000	SPROCKET, REAR	1	
12	08310-0008A-000	HEXAGON NUT	4	
13	64733H51300H000	RETAINER, REAR HUB BEARING	1	
14	61411H56000H000	ADJUSTER, CHAIN	2	
15	08322-0106A-000	WASHER, PLAIN	2	
16	08321-0106A-000	WASHER	2	
17	08310-0006A-000	NUT	2	
18	64441H56000H000	CAM, BRAKE	1	
19	64451H50001H000	LEVER, BRAKE CAM	1	
20	64492H50000H000	PLATE, BRAKE LINING	1	
21	01547-0635A-000	BOLT	1	
22	08316-1006A-000	NUT	1	
23	54443-36H00-000	O RING	1	
24	64210H50000H000	PANEL, REAR HUB	1	
25	54400H33Y00H000	SHOE COMP, BRAKE	1	
25-1	55421-36H00-000	SPRING, BRAKE SHOE	2	
26	09180H12005H000	SPACER	1	
27	09180H12137H000	SPACER	1	
28	64711H51000H000	AXLE, REAR	1	

4

Fig. 43

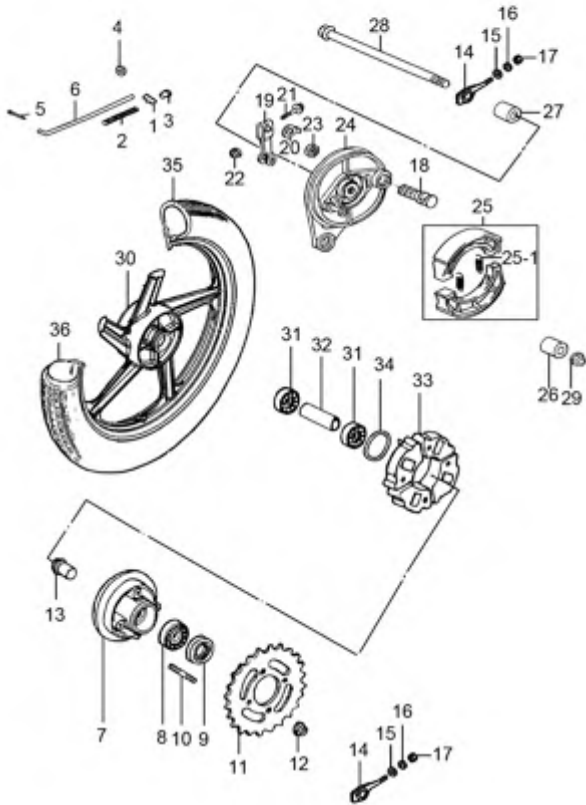


Fig.43 REAR WHEEL (X01-S460-0038)

REF. No.	PART No.	DESCRIPTION	Q' TY	REMARKS
29	08319-3112A-000	U-NUT	1	
30	64150H23A00H000	WHEEL COMP, REAR	1	
31	08133-63017-000	BEARING, FRONT HUB	2	
32	64731-36H00-000	SPACER, REAR HUB BEARING	1	
33	64651-36H00-000	ABSORBER, REAR HUB SHOCK	4	
34	64653-36H00-000	O RING	1	
35	65100H23A00H000	TIRE COMP, REAR	1	
36	65200H50020H000	TUBE ASSY, WHEEL INNER	1	

4

Fig. 44

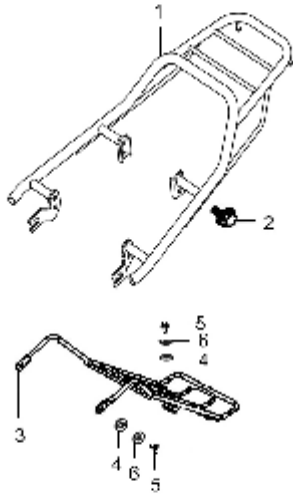


Fig.44 CARRIER (X01-S480-0029)

REF. No.	PART No.	DESCRIPTION	Q'TY	REMARKS
1	46310H56000H000	CARRIER COMP, REAR	1	
2	01550-0816A-000	HEXAGON BOLT WITH FLANGE	2	
3	46320H56000H000	CARRIER COMP, CENTER	1	
4	51875H51000H000	CUSHION, HEAD COVER RUBBER	3	
5	01550-0616B-000	BOLT	3	
6	09169-06028-000	WASHER	3	

4







PART NO.	FIG. NO. – REF. NO.	PART NO.	FIG. NO. – REF. NO.	PART NO.	FIG. NO. – REF. NO.	PART NO.	FIG. NO. – REF. NO.
<b>00000</b>		01550-0612A-000	38-8	03541-0516B-000	21-2	08322-0106A-000	28-5-6
		01550-0612B-000	29-7	03541-0516B-000	36-6	08322-0106A-000	43-4
		01550-0612B-000	31-12	03541-0520B-000	10-1-5	08322-0106A-000	43-15
		01550-0616A-000	30-9	04111-2015A-000	28-4-7	08322-0108A-000	41-8
		01550-0616A-000	32-5	04111-2015A-000	28-5-7	09100H06002H000	14-9
01421-0816B-000	43-10	01550-0616B-000	20-5	04111-2015A-000	43-5	09100H08001H000	26-2
01500-0620A-000	15-10	01550-0616B-000	30-17	04111-2020A-000	41-10	09100H08002H000	26-3
01500-0625A-000	01-24	01550-0616B-000	44-5	04111-3028A-000	27-4	09103H06013H000	04-14
01500-0630A-000	01-23	01550-0620A-000	32-7	07130-0512A-000	18-7	09103H06014H000	04-2
01500-0825A-000	16-4	01550-0816A-000	29-8	07130-06169-000	15-14	09103H06015H000	01-15
01500-0825A-000	28-11	01550-0816A-000	44-2	08110-60010-000	14-3	09103H10134H000	33-2
01547-0612A-000	13-12	01550-0820A-000	28-12	08110-62030-000	14-2	09111-06061-000	35-6
01547-0612A-000	06-8	01560-0606A-000	42-11	08133-63017-000	40-6	09111-06066-000	26-12
01547-0616A-000	12-3	01560-0608A-000	42-9	08133-63017-000	43-31	09111-06066-000	35-2
01547-0616A-000	18-8	01560-0612A-000	42-10	08143-62037-000	43-8	09111H06004H000	31-3
01547-0620A-000	01-13	01570-1045A-000	39-4	08310-0006A-000	11-2	09116H08001H000	28-7
01547-0620A-000	18-9	01580-0825A-000	28-3	08310-0006A-000	38-1-7	09116H08002H000	28-9
01547-0625A-000	12-4	02112-0418A-000	15-15	08310-0006A-000	43-17	09119H06002H000	31-4
01547-06287-000	04-20	02112-0508A-000	13-7	08310-0008A-000	41-7	09125H06098H000	25-9
01547-0628B-000	34-6-5	02112-0512B-000	33-10	08310-0008A-000	43-12	09128H06011H000	02-9
01547-0630A-000	04-13	02112-1520B-000	23-6	08310-0010A-000	42-3	09128H06011H000	01-7
01547-0630A-000	40-3	02112-3406A-000	17-1-9	08316-1005B-000	22-5	09135H08006H000	08-5
01547-0635A-000	43-21	02112-3512B-000	34-12	08316-1005B-000	23-7	09136-05051-000	22-2
01547-0640A-000	04-6	02112-7520A-000	20-7	08316-1005B-000	24-5	09136H04003H000	30-12
01547-0650A-000	17-2	02122-0516B-000	21-4	08316-1006A-000	40-4	09136H06153H000	24-2
01547-0650A-000	03-6	02122-0616A-000	06-12	08316-1006A-000	43-22	09136H06153H000	26-13
01547-0655A-000	04-15	02142-0506A-000	18-6	08316-1006B-000	38-3	09136H06155H000	20-3
01547-0660A-000	03-7	02142-0512B-000	36-3	08316-1010A-000	28-8	09139-06167-000	11-4-2
01547-0665A-000	03-5	03141-0412B-000	10-1-8	08319-2106B-000	34-6-4	09139H06083H000	26-7
01547-0665A-000	04-7	03241-0512B-000	30-5	08319-3108A-000	26-4	09139H06083H000	30-7
01547-0670A-000	04-16	03241-0512B-000	31-11	08319-3110A-000	33-5	09139H06083H000	31-9
01547-0680A-000	04-8	03241-0516B-000	30-4	08319-3112A-000	40-14	09140-10043-000	27-11
01550-0610B-000	10-2	03241-0516B-000	36-5	08319-3112A-000	43-29	09140-10043-000	41-4
01550-0612A-000	25-14	03511-0516B-000	25-4	08321-0106A-000	43-16	09140H26001H000	39-14
01550-0612A-000	03-12	03541-0412B-000	23-3	08322-0106A-000	28-4-6	09145H10001H000	42-5

5

PART NO.	FIG. NO. – REF. NO.	PART NO.	FIG. NO. – REF. NO.	PART NO.	FIG. NO. – REF. NO.	PART NO.	FIG. NO. – REF. NO.	
09148-05038-000	36-2	09206H08004H000	01-4	09407-25401-000	25-3	11159H12000H000	01-12	
09148-05L08-000	30-2	09206H10007H000	03-1-1	09440H04001H000	06-1-1	11165H12010H000	01-5	
09148-05L08-000	31-10	09209H12003H000	33-13	09440H04020H000	15-1-9	11167H12000H000	01-16	
09148-05L08-000	35-3	09209H12003H000	43-1	09440H09008H000	43-2	11167H12000H000	01-6	
09148H06001H000	26-11	09229H03001H000	26-9	09440H21001H000	41-6	11171H12020H000	01-3	
09148H06001H000	35-5	09250H34001H000	42-8	09443H05002H000	25-11	11173H12010H000	01-10	
09150H06002H000	33-14	09259-26016-000	04-17	09443H14004H000	27-13	11175H12020H000	01-17	
09150H06002H000	43-3	09261H10003H000	06-1-3	09443H15203H000	27-9	11183H12020H0A0	02-10	
09160-05037-000	34-13	09280-06011-000	03-8	09443H16001H000	27-5	11183H12020H0B0	02-11	
09160-06164-000	11-4-3	09280-22008-000	04-18	09471-12020-000	22-1-2	11210H120R0H0H0	02-1	
09160-12090-000	42-4	09280H00001H000	06-10	09471-12077-000	21-1-5	11214H12000H000	02-3	
09160-19006-000	28-4-4	09280H08010H000	13-23	09471-12081-000	22-1-3	11215H12000H000	02-4	
09160-19006-000	28-5-4	09280H11001H000	03-10	09471-12128-000	24-1-2	11216H12000H000	02-5	
09160H06002H000	38-4	09280H13010H000	04-11	09471-12177-000	23-1-3	11217H12000H000	02-6	
09160H08002H000	13-21	09280H18002H000	04-23	09471-12177-000	23-2-3	11218H35000H000	02-7	
09160H08009H000	08-6	09280H25010H000	01-22	09471-12177-000	23-4-2	11218H35000H000	04-4	
09160H10001H000	42-2	09280H28001H000	15-12	09471-12177-000	23-5-2	11219H12000H000	02-8	
09160H14003H000	08-14	09280H31001H000	01-14	09481-15001-000	25-6	11241H12000H000	02-2	
09161H06004H000	11-4-4	09280H52100H000	17-1-6	09482-00406-000	01-18	11300H12Y20H000	03-1	
09164H08001H000	34-14	09283H10002H000	07-10	09491H78070H000	09-1-13	11325H13010H000	13-15	
09166H26001H000	39-15	09283H12001H000	15-8	09492H56000H000	09-1-14	11329H12002H000	03-9	
09168H06002H000	11-4-5	09283H17010H000	14-5	09494H51100H000	09-1-11	11340H12040H000	04-1	
09169-06028-000	44-6	09283H18011H000	06-2	09800H20015H000	26-5	11351H12030H000	04-9	
09169-06065-000	32-6	09283H30011H000	06-13			11353H33001H000	04-10	
09169-06071-000	32-4	09285H13010H000	16-2			11361H12040H000	04-19	
09180-06154-000	38-1-4	09321H10002H000	38-1-3			11391H12010H000	06-9	
09180-06154-000	38-6	09401-08414-000	29-3			11415H120R2H000	03-2	
09180H06207H000	30-16	09401-09101-000	29-14	<b>10000</b>		11416H12000H000	03-3	
09180H08204H000	28-4-9	09401H09001H000	29-12			11418H12040H000	04-5	
09180H08204H000	28-5-9	09401H10301H000	10-3			11481H12000H000	03-4	
09180H11203H000	28-4-8	09401H51110H000	09-1-6		11110H12020H000	01-1	11482H12000H000	04-3
09180H11203H000	28-5-8	09402H44203H000	10-1-10		11140H12C20H000	01-2	11483H12000H000	04-12
09180H12005H000	43-26	09404-06429-000	03-11	11150H12020H000	01-9	11971H12020H000	04-22	
09180H12137H000	43-27	09404-06433-000	25-5	11156H12020H000	01-8	12111H12001H0H0	05-1	
09180H12206H000	40-12	09407-14403-000	25-2	11158H12030H000	01-11	12140H12020H000	05-2	

PART NO.	FIG. NO. – REF. NO.	PART NO.	FIG. NO. – REF. NO.	PART NO.	FIG. NO. – REF. NO.	PART NO.	FIG. NO. – REF. NO.
12151H12000H000	05-3	12933H12000H000	07-7	16330H12000H000	08-15	21621H13010H000	13-9-3-4
12152H12000H000	05-4	13111H56010H000	01-19	16400H12000H000	12-1	21631H13010H000	13-1-1-1
12200H13010H000	05-5	13121H12000H000	01-21	16520H12000H000	12-6	21634H13010H000	13-9-3-5
12610H52100H000	17-1-1	13128H12000H000	01-20	16731H12000H000	12-2	21635H13010H000	13-9-3-1
12620H12000H000	06-11	13200H56110H000	09-1			21643H13010H000	13-9-2
12630H12C00H000	06-1-5	13247H51100H000	09-1-15	<b>20000</b>		21644H13010H000	13-16
12633H12000H000	06-1-2	13250H51100H000	09-1-2			21645H12020H000	14-6
12640H12C00H000	06-1	13251H56000H000	09-1-4			21655H13001H000	13-20
12643H12000H000	06-7	13253H51100H000	09-1-18			21656H12000H000	16-1-3
12649H12C00H000	06-1-4	13254H51100H000	09-1-16			21656H12010H000	16-1-8
12710H12020H000	07-11	13267H51100H000	09-1-10	21134H13010H000	13-1-2	21711H12000H000	08-16
12728H12000H000	11-1	13279H51100H000	09-1-3	21135H13010H000	13-1-2-5	22130H13020H000	13-9-1
12735H12000H000	06-5	13370H56000H000	09-1-17	21221H13010H000	13-1-1	23211H12C00H000	13-18
12741H12000H000	08-2	13383H56110H000	09-1-7	21301H13020H000	13-1	23230H12000H000	13-19
12741H52100H000	17-1-7	13385H51100H000	09-1-12	21337H13010H000	13-1-2-1	23250H12000H000	13-19-1
12760H12000H000	08-1	13388H51100H000	09-1-8	21344H13010H000	13-2	23260H13000H000	13-17
12771H12000H000	08-4	13389H51110H000	09-1-9	21345H13010H000	13-3	23267H12010H000	12-5
12810H12000H000	08-9	13573H51100H000	09-1-5	21348H13010H000	13-6	23268H12C00H000	13-22
12812H12000H000	08-8	13684H21D20H000	09-1-1	21410H13010H000	13-9-3	24102H51300H000	14-1
12830H12000H000	08-7	13695H52100H000	04-21	21421H35000H000	13-9-3-7	24103H51300H000	14-4
12840H12040H000	07-1	13700H56010H000	10-1	21441H13020H000	13-9-3-2	24121H13000H000	14-1-1
12842H12000H000	07-1-1	13713H56000H000	10-1-7	21451H13010H000	13-9-3-3	24129H12000H000	14-4-13
12843H12000H000	07-1-2	13723H51300H000	10-1-1	21462H13010H000	13-9-3-6	24131H51300H000	14-4-1
12861H12000H000	07-2	13724H51300H000	10-1-4	21501H13020H000	13-1-2-2	24148H12000H000	14-1-5
12872H12000H000	08-3	13742H51300H000	10-1-6	21527H12000H000	13-10	24149H12000H000	14-1-6
12880H12000H000	08-10	13743H51300H000	10-1-12	21528H13010H000	13-1-2-4	24149H12010H000	16-1-4
12882H12000H000	08-11	13781H51300H000	10-1-2	21528H13020H000	13-8	24149H12020H000	16-1-11
12883H12000H000	08-12	13791H51301H000	10-1-11	21529H12000H000	13-5	24149H12C00H000	13-19-2
12884H12001H000	08-13	13810H51300H000	10-1-3	21533H12000H000	13-4	24149H13000H000	13-1-1-4
12911H12020H000	07-3	13851H13010H000	13-11	21535H13010H000	13-1-1-2	24149H13010H000	13-1-1-5
12912H12010H000	07-4	13881H51300H000	10-1-9	21543H13010H000	13-1-1-3	24149H13020H000	13-1-2-3
12921H12000H000	07-9	13912H12000H000	14-4-10	21546H13010H000	13-1-2-6	24153H12000H000	14-4-6
12922H12000H000	07-8	14036H56100H000	11-4	21601H13020H000	13-9	24156H12000H000	14-4-9
12931H12000H000	07-5	14181H50000H000	11-3	21616H13010H000	13-13	24158H12000H000	14-4-11
12932H50100H000	07-6	14781H56000H000	11-4-1	21619H13010H000	13-14	24159H12000H000	14-4-12

PART NO.	FIG. NO. – REF. NO.	PART NO.	FIG. NO. – REF. NO.	PART NO.	FIG. NO. – REF. NO.	PART NO.	FIG. NO. – REF. NO.	
24221H12000H000	14-1-2	26241H13000H000	16-1-2	33680H56010H000	19-2	37155H51301H000	25-8	
24231H12000H000	14-1-3	26282H13000H000	16-1-6	33810H56001H000	17-1-8	37310H51010H000	34-2	
24232H12000H000	14-4-7	26300H56000H000	16-3	34100H56001H000	21-1	37340-20E00-000	34-1	
24232H12010H000	14-4-8	27511H12000H000	14-7	34111H56000H000	21-1-2	37420H51010H000	34-3	
24241H13000H000	14-1-4	27512H12000H000	14-8	34150H56000H000	21-1-1	37510-10E00-000	34-5	
24311H12000H000	14-4-2	27600H52100H100	14-10	34173H56000H000	21-1-3	37520H51010H000	34-4	
24321H12000H000	14-4-3	27750H12010H000	06-3	34500H56000H000	21-1-4	37720H51300H000	15-11	
24331H12000H000	14-4-4	27750H12020H000	06-4	34810H56000H000	29-9	37730H51300H000	15-13	
24341H12000H000	14-4-5			34825H85300H000	29-11	37740H50202H000	25-10	
25031H51300H000	15-1			34886H50000H000	29-10	37741H50200H000	25-12	
25211H12000H000	15-1-1			34910H7E000H000	21-3	38500H51011H000	25-13	
25212H12000H000	15-1-2			35100H56000H000	22-1	38610-04H01-000	23-8	
25213H12000H000	15-1-3	<b>30000</b>		35121H56000H000	22-1-1	38840H2A010H000	25-16	
25311H51300H000	15-1-4			35151-21J00-000	24-3			
25312H12010H000	15-3			35171H56000H000	22-1-4			
25314H12030H000	15-1-8		31100H56002H000	17-1	35175H56000H000	22-1-5		
25329H12000H000	15-1-5		31133H52100H000	17-1-3-1	35194H51000H000	22-3		
25334H12000H000	15-1-6	31135H52100H000	17-1-3-2	35601H56000H000	23-1	<b>40000</b>		
25335H12000H000	15-1-7	31150H52100H000	17-1-3	35602H56000H000	23-2			
25339H12010H000	15-5	31156H52100H000	17-1-4	35603H56000H000	23-4			
25350H12020H000	15-4	31158H52100H000	17-1-5	35604H56000H000	23-5		41100H56Y01H000	26-1
25357H12000H000	15-6	31160H56000H000	17-1-2	35612H56000H000	23-1-1	41541H50201H000	26-10	
25381H12000H000	15-2	31800H50000H000	20-1	35618H56000H000	23-1-2	41569H50200H000	26-15	
25500H12000H000	15-7	32100H56000H000	18-1	35632H56000H000	23-2-1	42100H50001H000	27-1	
25510H13000H000	15-7-1	32101H51300H000	18-1-1	35638H56000H000	23-2-2	42112H50000H000	27-6	
25520H12000H000	15-7-2	32102H52100H000	18-1-2	35652H56000H000	23-4-1	42181H50002H000	27-2	
25600H56010H000	15-9	32113H35000H000	18-2	35672H56000H000	23-5-1	42211H50000H000	27-3	
25652H16500H000	15-9-1	32114H12000H000	18-3	35710H56000H000	24-1	42310H51000H000	27-8	
26210H13020H000	16-1	32115H12000H000	18-4	35712H56000H000	24-1-1	42551H50000H000	27-10	
26211H12000H000	16-1-1	32116H12020H000	18-5	35764H2E000H000	24-1-3	43110H56100H000	27-12	
26225H12000H000	16-1-10	32491H33010H000	06-6	35950-04H01-000	22-4	43142H11200H000	27-7	
26226H12000H000	16-1-9	32800H51022H000	20-2	35970-04H01-000	24-4	43142H21302H000	27-14	
26226H12000H000	15-7-2-1	32900H51311H000	20-4	36610H56000H000	25-1	43310H56000H000	43-6	
26234H12000H000	16-1-5	33410H51310H000	20-6	37011H51330H000	25-15	43510H51040H000	28-1	
26235H12000H000	16-1-7	33611H23612H000	19-1	37100H51301H000	25-7	43551H51020H000	28-2	

PART NO.	FIG. NO. – REF. NO.	PART NO.	FIG. NO. – REF. NO.	PART NO.	FIG. NO. – REF. NO.	PART NO.	FIG. NO. – REF. NO.
43600H56001H000	28-4	46310H56000H000	44-1	48031H56020HF01	30-10	51351H50000H000	39-1-4
43610-03001-000	28-4-2	46320H56000H000	44-3	48031H56020HF02	30-10	51351H50000H000	39-2-4
43610-03001-000	28-5-2	47011H56000HF01	31-6	48031H56020HF03	30-10	51358H52100H000	33-3
43612-33201-000	28-4-3	47011H56000HF02	31-6	48031H56020HF04	30-10	51368H52100H000	33-4
43612-33201-000	28-5-3	47011H56000HF03	31-6	48031H56020HF05	30-10	51410H56000H000	39-3
43621H56000H000	28-4-1	47011H56000HF04	31-6	48031H56020HF06	30-10	51611H50000H000	26-1-1
43640H50211H000	28-6	47011H56000HF05	31-6	48031H56020HF07	30-10	51611H50000H000	39-9
43641H22500H000	28-4-5	47011H56000HF06	31-6	48111H56000H108	30-1	51612H50000H000	26-1-2
43641H22500H000	28-5-5	47011H56000HF07	31-6	48111H56000H117	30-1	51612H50000H000	39-8
43643H50000H000	28-4-10	47021H56000HF01	31-5	48111H56000H504	30-1	51621H50000H000	39-10
43643H50000H000	28-5-10	47021H56000HF02	31-5	48111H56000H616	30-1	51622H50000H000	39-7
43644H50000H000	28-4-11	47021H56000HF03	31-5	48111H56000H815	30-1	51625H50000H000	39-5
43644H50000H000	28-5-11	47021H56000HF04	31-5	48111H56000H819	30-1	51626H50000H000	39-6
43650H50000H000	28-10	47021H56000HF05	31-5	48111H56000H911	30-1	51630H50001H000	39-13
43700H56001H000	28-5	47021H56000HF06	31-5	48112H56001H000	30-14	51650H50000H000	39-12
43721H56000H000	28-5-1	47021H56000HF07	31-5	48122H56001H000	30-13	51660H50000H000	39-11
44110H56101H000	29-2	47121H56000H000	31-2	48125H50200H000	26-14	51875H51000H000	30-15
44198H56000H000	29-4	47221H56000H000	31-1	48131H56000H000	30-3	51875H51000H000	44-4
44199H50201H000	29-5	47311H56000H108	31-7	48140H50200H000	30-8	53111H56000H108	32-1
44200H51010H000	29-1	47311H56000H117	31-7	48141H56000H000	30-6	53111H56000H117	32-1
44256H12600H000	26-16	47311H56000H504	31-7	<b>50000</b>		53111H56000H504	32-1
44256H12600H000	29-13	47311H56000H616	31-7			53111H56000H616	32-1
44281-04HA0-000	26-17	47311H56000H815	31-7			53111H56000H815	32-1
44281-04HA0-000	38-1-9	47311H56000H819	31-7			53111H56000H819	32-1
44360H50000H000	29-6	47311H56000H911	31-7			53111H56000H911	32-1
45011H56030H000	38-1	47341H56000H000	26-6	51103H50001H000	39-1	53211H56000H000	32-2
45111H50000H000	38-2	47433H50000H000	26-18	51104H50001H000	39-2	54110H23A02H000	40-1
45146H52100H000	35-7	47433H50000H000	31-8	51117H50000H000	39-1-5	54200H50000H000	40-17
45147H50000H000	38-1-5	48021H56000HF01	30-11	51117H50000H000	39-2-5	54400H33Y00H000	40-15
45147H50000H000	38-5	48021H56000HF02	30-11	51153H50000H000	39-1-1	54400H33Y00H000	43-25
45148H50000H000	38-1-8	48021H56000HF03	30-11	51153H50000H000	39-2-1	54441H50000H000	40-11
45160H56001H000	38-1-1	48021H56000HF04	30-11	51156H50000H000	39-1-2	54443-36H00-000	40-16
45200H50010H000	38-1-2	48021H56000HF05	30-11	51156H50000H000	39-2-2	54443-36H00-000	43-23
45252H50000H000	38-1-6	48021H56000HF06	30-11	51173H50000H000	39-1-3	54451H50002H000	40-8
45700H50000H000	38-7	48021H56000HF07	30-11	51173H50000H000	39-2-3	54453H50000H000	40-2

5

PART NO.	FIG. NO. – REF. NO.	PART NO.	FIG. NO. – REF. NO.	PART NO.	FIG. NO. – REF. NO.
54492H5000H000	40-5	58721H51000H000	34-11	65100H23A00H000	43-35
54610H5000H000	40-17-1	58722H51000H000	34-10	65200H50020H000	43-36
54614H11200H000	40-17-3			68170H79000HMT1	36-1-1
54621H50001H000	40-17-4			68170H79000HSIL	36-1-1
54640H5000H000	40-17-2			68311H56100H000	26-8
54711H5000H000	40-13			68319H51030H000	37-1
54731H50200H000	40-18			68332H51010H000	37-3
54742-36H00-000	40-7	<b>60000</b>		68391-45F00-000	37-2
55100H23A00H000	40-9				
55200H50020H000	40-10				
55421-36H00-000	40-15-1	61000H56000H000	41-1		
55421-36H00-000	43-25-1	61200H50000H000	41-1-1	<b>90000</b>	
56031H56000HF01	36-1	61211H51001H000	41-3		
56031H56000HF02	36-1	61273H50200H000	41-2		
56031H56000HF03	36-1	61310H50001H000	42-6		
56031H56000HF04	36-1	61320H50000H000	42-7	93162-37G00-000	32-3
56031H56000HF05	36-1	61411H56000H000	43-14	95700H50020H000	38-11
56031H56000HF06	36-1	62100H56000H000	42-1	95711H50000H000	38-9
56031H56000HF07	36-1	63112H56000H000	35-1	95721H50000H000	38-10
56110H56001H000	33-1	63211H56000H000	35-4	99011H56110H000	37-4
56321H56000H000	36-4	64150H23A00H000	43-30		
56500H56000H000	33-6	64210H50000H000	43-24		
56600H56000H000	33-7	64310H50000H000	41-5		
57100H51000H000	34-7	64341H50000H000	41-9		
57110H51010H000	34-8	64441H56000H000	43-18		
57211H51000H000	34-9	64451H50001H000	43-19		
57300H56001H000	34-6	64492H50000H000	43-20		
57311H56001H000	34-6-1	64511H56000H000	43-11		
57421-09G00-000	34-6-2	64611H51001H000	43-7		
57431-09GA0-000	34-6-3	64612H50000H000	43-9		
57470-20E00-000	34-6-6	64651-36H00-000	43-33		
58100H56000H000	33-12	64653-36H00-000	43-34		
58300H56001H000	33-9	64711H51000H000	43-28		
58410H56000H000	33-11	64731-36H00-000	43-32		
58620H56000H000	33-8	64733H51300H000	43-13		

# Haojue HJ110-6 PARTS CATALOGUE

---

1st Edition

Published in 2016.7

## DACHANGJIANG GROUP CO.,LTD.

No.5, Jiandabei Rd., Jiangmen City, Guangdong Province, P.R.China

Tel: 86-750-3288999 Fax: 86-750-3230989 Code: 529000

---

DACHANGJIANG GROUP COPYRIGHT POSSESSION.

DACHANGJIANG GROUP CO. , LTD.